

TUGAS IV
JARINGAN KOMPUTER



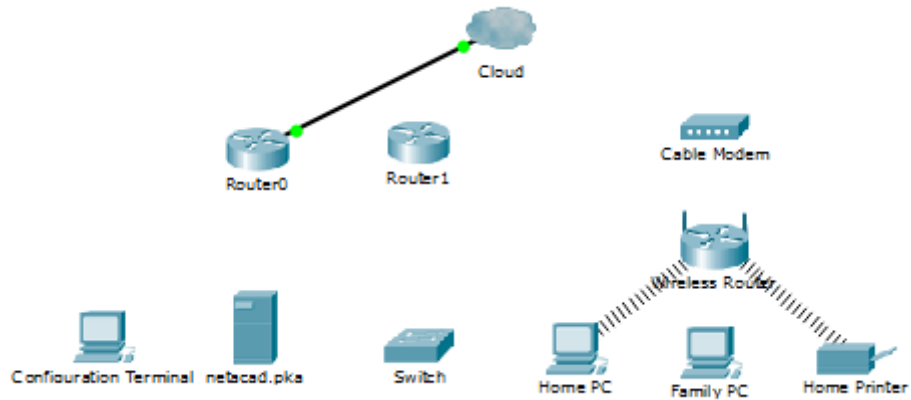
Nama : Randa Fratelli Junaedi
Nim : 09011181419006
Nama Dosen : Deris Stiawan, M.T. PH.D

JURUSAN SISTEM KOMPUTER
FAKULTAS ILMU KOMPUTER
UNIVERSITAS SRIWIJAYA
2016

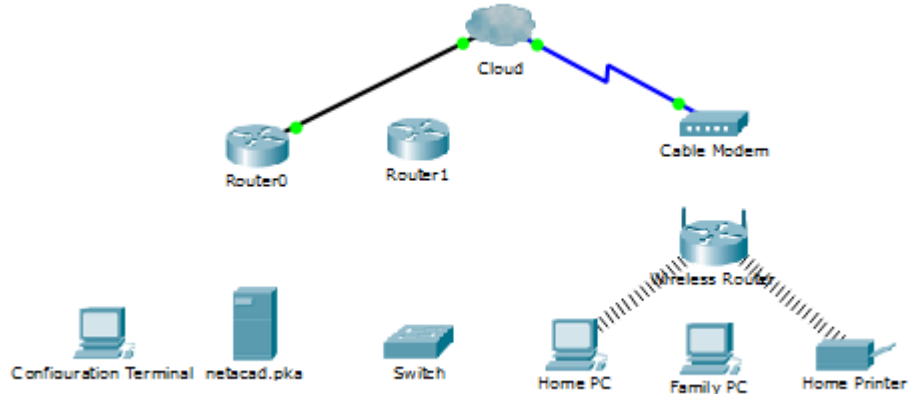
Packet Tracer - Connecting a Wired and Wireless LAN

Part 1: Connect to the Cloud

a)

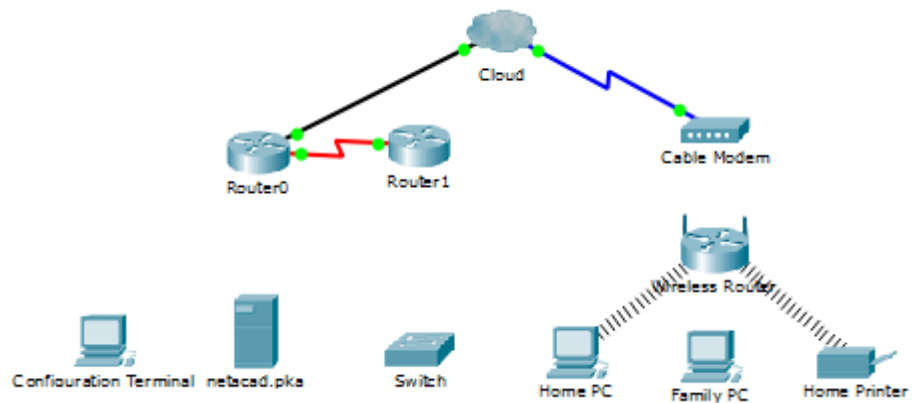


b)

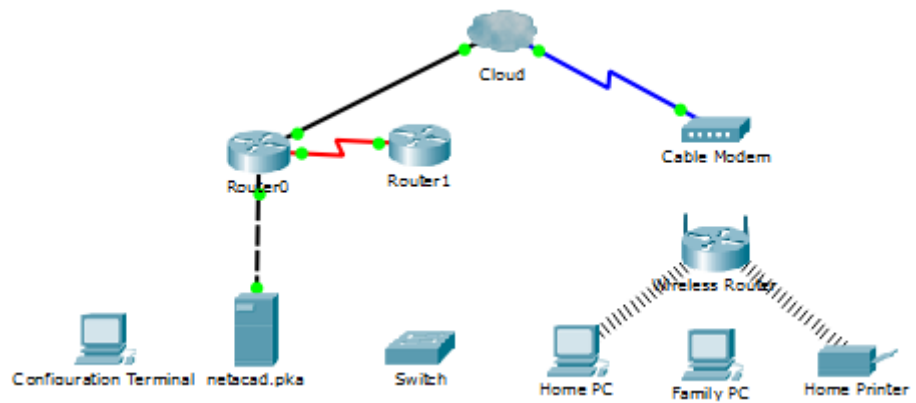


Part 2: Connect Router0

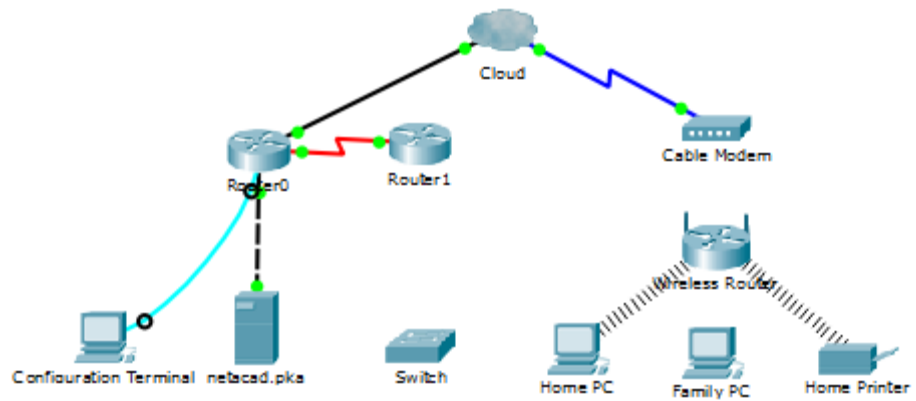
a)



b)

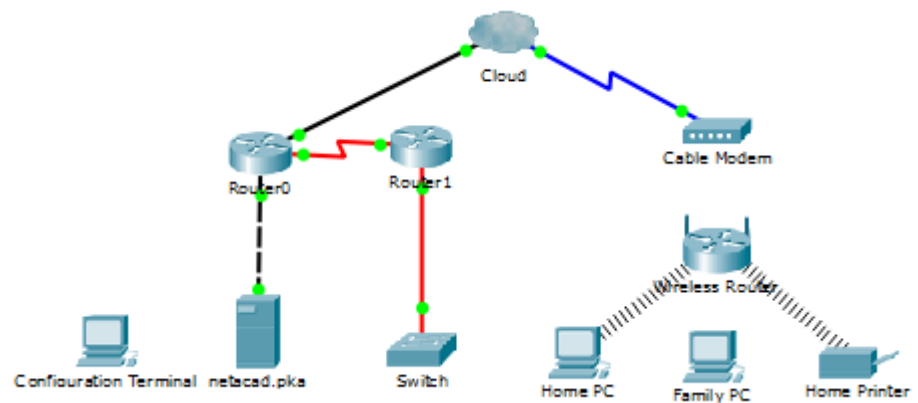


c)

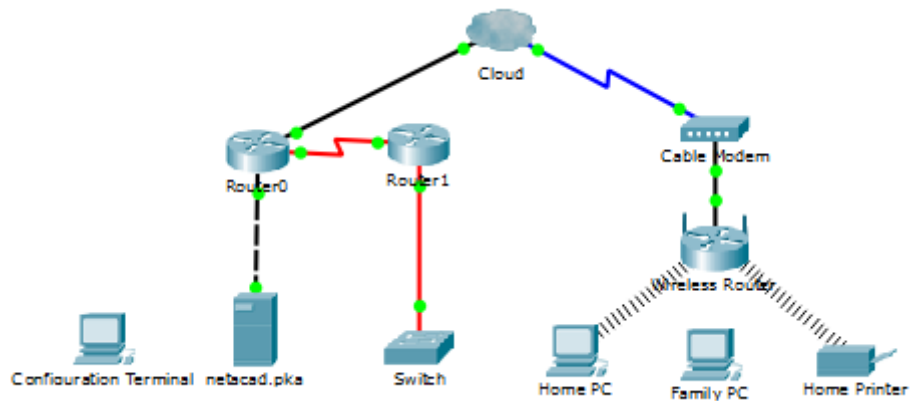


Part 3: Connect Remaining Devices

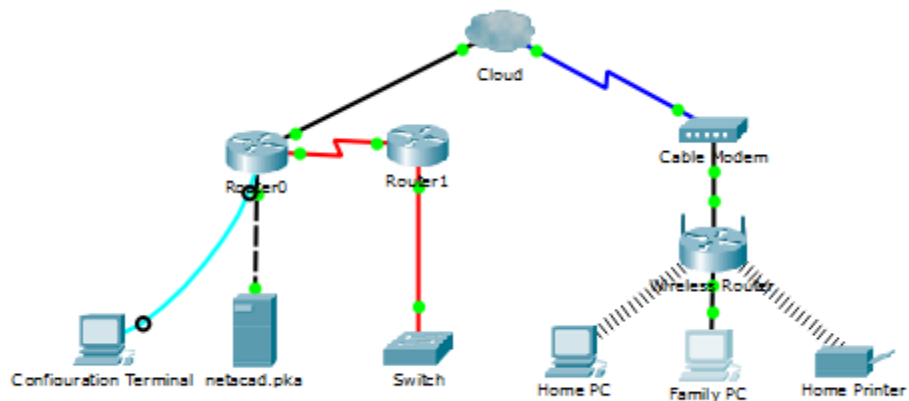
a)



b)



c)



Part 4: Verify Connections

a) *

```
Command Prompt

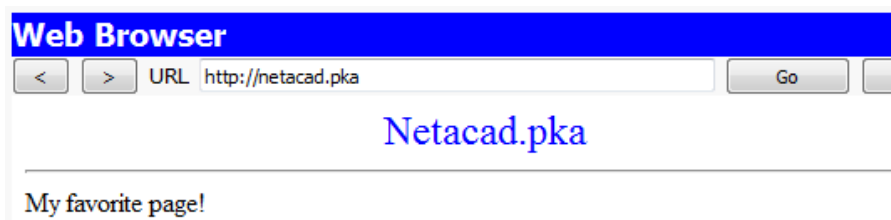
Packet Tracer PC Command Line 1.0
PC>ping netacad.pka

Pinging 10.0.0.254 with 32 bytes of data:

Reply from 10.0.0.254: bytes=32 time=56ms TTL=126
Reply from 10.0.0.254: bytes=32 time=24ms TTL=126
Reply from 10.0.0.254: bytes=32 time=14ms TTL=126
Reply from 10.0.0.254: bytes=32 time=21ms TTL=126

Ping statistics for 10.0.0.254:
    Packets: Sent = 4, Received = 4, Lost = 0 (0% loss),
    Approximate round trip times in milli-seconds:
        Minimum = 14ms, Maximum = 56ms, Average = 28ms
```

*



b)

```
Command Prompt

PC>ping 172.16.0.2

Pinging 172.16.0.2 with 32 bytes of data:

Request timed out.
Request timed out.
Reply from 172.16.0.2: bytes=32 time=33ms TTL=252
Reply from 172.16.0.2: bytes=32 time=47ms TTL=252

Ping statistics for 172.16.0.2:
    Packets: Sent = 4, Received = 2, Lost = 2 (50% loss),
    Approximate round trip times in milli-seconds:
        Minimum = 33ms, Maximum = 47ms, Average = 40ms

PC>ping 172.16.0.2

Pinging 172.16.0.2 with 32 bytes of data:

Reply from 172.16.0.2: bytes=32 time=61ms TTL=252
Reply from 172.16.0.2: bytes=32 time=43ms TTL=252
Reply from 172.16.0.2: bytes=32 time=45ms TTL=252
Reply from 172.16.0.2: bytes=32 time=34ms TTL=252

Ping statistics for 172.16.0.2:
    Packets: Sent = 4, Received = 4, Lost = 0 (0% loss),
    Approximate round trip times in milli-seconds:
        Minimum = 34ms, Maximum = 61ms, Average = 45ms
```

c)

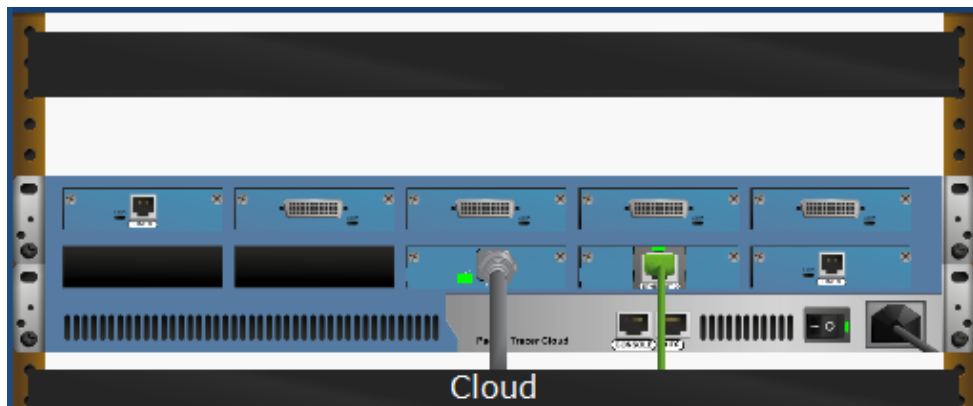
```
Terminal

to up
%LINK-5-CHANGED: Interface Serial0/0/0, changed state to up
%LINEPROTO-5-UPDOWN: Line protocol on Interface Serial0/0/0, changed state to up
%DUAL-5-NBRCHANGE: IP-EIGRP 1: Neighbor 172.31.0.2 (Serial0/0/0) is up: new adjacency
%LINEPROTO-5-UPDOWN: Line protocol on Interface FastEthernet0/1, changed state to up
%DHCPD-4-PING_CONFLICT: DHCP address conflict: server pinged 192.168.2.1.

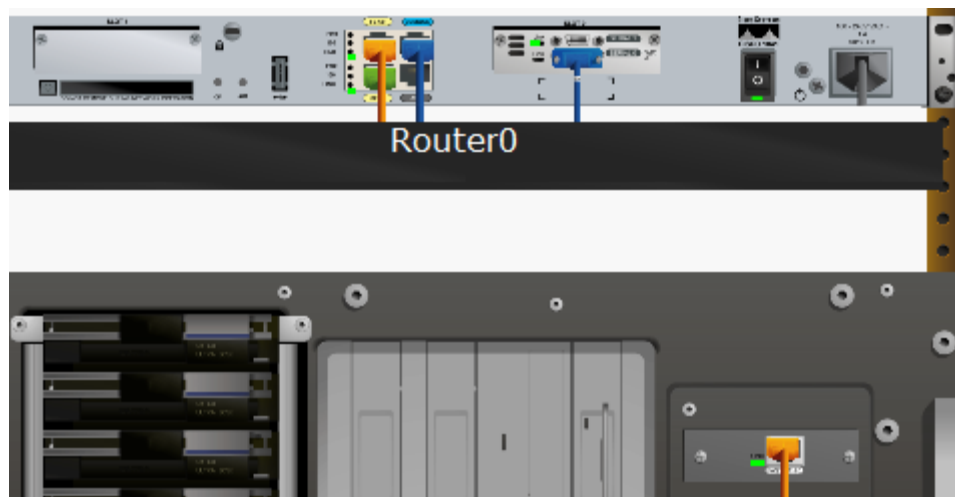
Router0>show ip interface brief
Interface      IP-Address      OK? Method Status
Protocol
FastEthernet0/0 192.168.2.1     YES manual up
FastEthernet0/1 10.0.0.1        YES manual up
Serial0/0/0     172.31.0.1     YES manual up
Serial0/0/1     unassigned      YES unset  administratively down down
Vlan1           unassigned      YES unset  administratively down down
Router0>
```

Part 5: Examine the Physical Topology

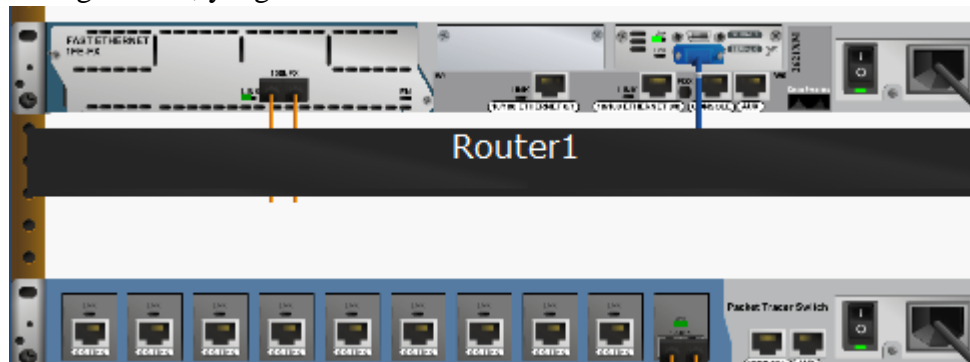
- a) memiliki 2 saklar



- b) Konfigurasi Terminal



- c) karena dua kabel oranye terhubung ke setiap perangkat untuk mengirimkan, yang satu untuk menerima



- d) a. merupakan jangkauan jaringan nirkabel
b. jaringan rumah biasanya tidak memiliki rak

