

Nama : Juan Alkasar


Nim : 090011281520092

Website pemerintah

Menggunakan <https://www.netcraft.com/>

1. Target :

<http://www.kemdikbud.go.id>

Site	http://www.kemdikbud.go.id	Netblock Owner	Pustekkom
Domain	kemdikbud.go.id	Nameserver	ns1.kemdikbud.go.id
IP address	118.98.227.101 (VirusTotal)	DNS admin	dwi@kemdikbud.go.id
IPv6 address	<i>Not Present</i>	Reverse DNS	<i>unknown</i>
Domain registrar	<i>unknown</i>	Nameserver organisation	<i>unknown</i>
Organisation	<i>unknown</i>	Hosting company	<i>unknown</i>
Top Level Domain	Indonesia (.go.id)	DNS Security Extensions	<i>unknown</i>
Hosting country	 ID		

Hosting History

Netblock owner	IP address	OS	Web server	Last seen Refresh
Pustekkom Kementerian Pendidikan Nasional Jl. RE Martadinata, Cipayung, Ciputat Tangerang, Banten	118.98.227.101	Linux	unknown	28-May-2017

Netblock owner	IP address	OS	Web server	Last seen Refresh
Pustekkom Kementerian Pendidikan Nasional Jl. RE Martadinata, Cipayung, Ciputat Tangerang, Banten	118.98.227.101	Linux	Apache	12-Mar-2017
Pustekkom Kementerian Pendidikan Nasional Jl. RE Martadinata, Cipayung, Ciputat Tangerang, Banten	118.98.166.162	Linux	Apache	1-Jul-2016
Pustekkom Kementerian Pendidikan Nasional Jl. RE Martadinata, Cipayung, Ciputat Tangerang, Banten	118.98.236.58	Linux	Apache/2.2.22 Ubuntu	5-Sep-2015
Pustekkom Kementerian Pendidikan Nasional Jl. RE Martadinata, Cipayung, Ciputat Tangerang, Banten	118.98.236.23	Linux	Apache/2.2.22 Ubuntu	14-May-2014
Pustekkom Kementerian Pendidikan Nasional Jl. RE Martadinata, Cipayung, Ciputat Tangerang, Banten	118.98.223.68	Linux	Apache/2.2.14 Ubuntu	25-Jul-2012

Menggunakan <https://www.robtext.com>

www.kemdikbud.go.id quick info	
General	
FQDN	www.kemdikbud.go.id
Host Name	www
Domain Name	kemdikbud.go.id
Registry	go.id
TLD	id
DNS	
IP numbers	<u>118.98.227.101</u>

Domain DNS	
Name servers	<u>ns1.kemdikbud.go.id</u> <u>ns2.kemdikbud.go.id</u>
Mail servers	<u>ciremai.kemdikbud.go.id</u> <u>mail.kemdikbud.go.id</u> <u>webmail2.kemdikbud.go.id</u>
IP Numbers	<u>118.98.227.101</u>

- **Autonomous System Number (ASN)**

Www.kemdikbud.go.id has one IP number.

IP number

The IP number is 118.98.227.101. The IP number is in Tangerang, Indonesia. It is hosted by Trans for AS7713.

- **WHOIS**

whois Pustekkom Kementerian Pendidikan Nasional Jl. RE Martadinata, Cipayung, Ciputat Tangerang, Banten

www.kemdikbud.go.id

a 118.98.227.101

whois Pustekkom Kementerian Pendidikan Nasional Jl. RE Martadinata, Cipayung, Ciputat Tangerang, Banten

route 118.98.227.0/24

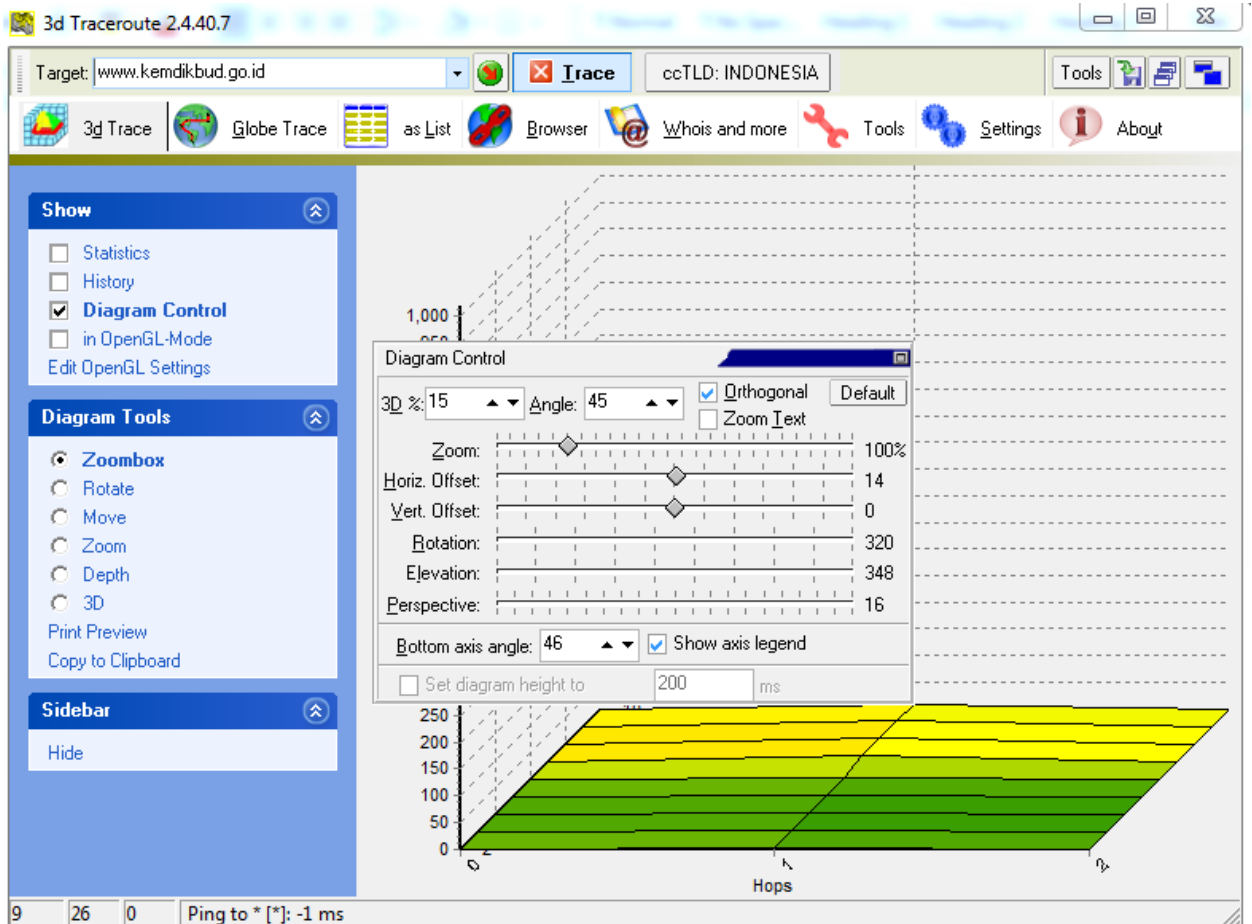
bgp AS18051

asname JARDIKNAS-AS-AP Pustekkom

descr Trans for AS7713

location Tangerang, Indonesia

Menggunakan 3D traceroute



Pada website pemerintahan yaitu <http://www.kemdikbud.go.id> ini bisa kita lihat bahwa lokasinya berada di Indonesia

Website dalam negeri

Menggunakan <https://www.netcraft.com/>

1. Target :

<http://www.palembang.go.id>

Site	http://www.palembang.go.id	Netblock Owner	Indonesia Online Access
Domain	palembang.go.id	Nameserver	ns1.palembang.go.id
IP address	182.23.103.155 (VirusTotal)	DNS admin	root@palembang.go.id
IPv6 address	<i>Not Present</i>	Reverse DNS	<i>unknown</i>
Domain registrar	<i>unknown</i>	Nameserver organisation	<i>unknown</i>
Organisation	<i>unknown</i>	Hosting company	PT. Aplikanusa Lintasarta
Top Level Domain	Indonesia (.go.id)	DNS Security Extensions	<i>unknown</i>
Hosting country	 ID		

Hosting History

Netblock owner	IP address	OS	Web server	Last seen Refresh
Indonesia Online Access PT Aplikanusa Lintasarta	182.23.103.155	Linux	Apache/2	9-Feb-2019
PT TELKOM INDONESIA Menara Multimedia Lt.7 Jl. Kebon sirih No.12 JAKARTA	36.67.66.180	Linux	Apache/2	5-Mar-2018
IP Pool POP Medan	202.152.10.99	Linux	Apache/2	29-Mar-2016
IP Pool POP Medan	202.152.10.99	Linux	unknown	28-Jun-2014

Netblock owner	IP address	OS	Web server	Last seen Refresh
IP Pool POP Medan	202.152.10.99	Linux	Apache/2	27-Jun-2014
PT MULTI DATA PALEMBANG Internet Service Provider Jakarta	116.90.209.194	Linux	Apache/2	18-Oct-2013
PT MULTI DATA PALEMBANG Internet Service Provider Jakarta	116.90.209.199	Linux	Apache/2	14-Oct-2013
PT MULTI DATA PALEMBANG REGIONAL INTERNET PROVIDER JL. LINGKARAN I NO 305 PALEMBANG	222.124.7.108	Linux	Apache/2	27-Dec-2010
PT MULTI DATA PALEMBANG REGIONAL INTERNET PROVIDER JL. LINGKARAN I NO 305 PALEMBANG	222.124.7.106	Linux	Apache/2.0.47 Fedora	25-Dec-2005
PT. IndoInternet Cyber Building, 8th Flr Jl. Kuningan Barat no 8 Jakarta 12710	202.159.31.33	Linux	-	17-Mar-2005

Menggunakan <https://www.robtext.com>

www.palembang.go.id quick info	
General	
FQDN	www.palembang.go.id
Host Name	www
Domain Name	palembang.go.id
Registry	go.id
TLD	id
DNS	
IP numbers	<u>36.67.66.180</u>

Domain DNS	
Name servers	<u>ns10.palembang.go.id</u> <u>ns9.palembang.go.id</u>
Mail servers	<u>mail.palembang.go.id</u>
IP Numbers	<u>36.67.66.180</u>

- **Autonomous System Number (ASN)**

Www.palembang.go.id has one IP number.

IP number

The IP number is 36.67.66.180. The IP number is in Indonesia. It is hosted by PT. Telekomunikasi Indonesia.

- **WHOIS**

whois PT TELKOM INDONESIA

Hierarchical analysis of the entity

www.palembang.go.id

a 36.67.66.180

whois PT TELKOM INDONESIA

route 36.67.0.0/16

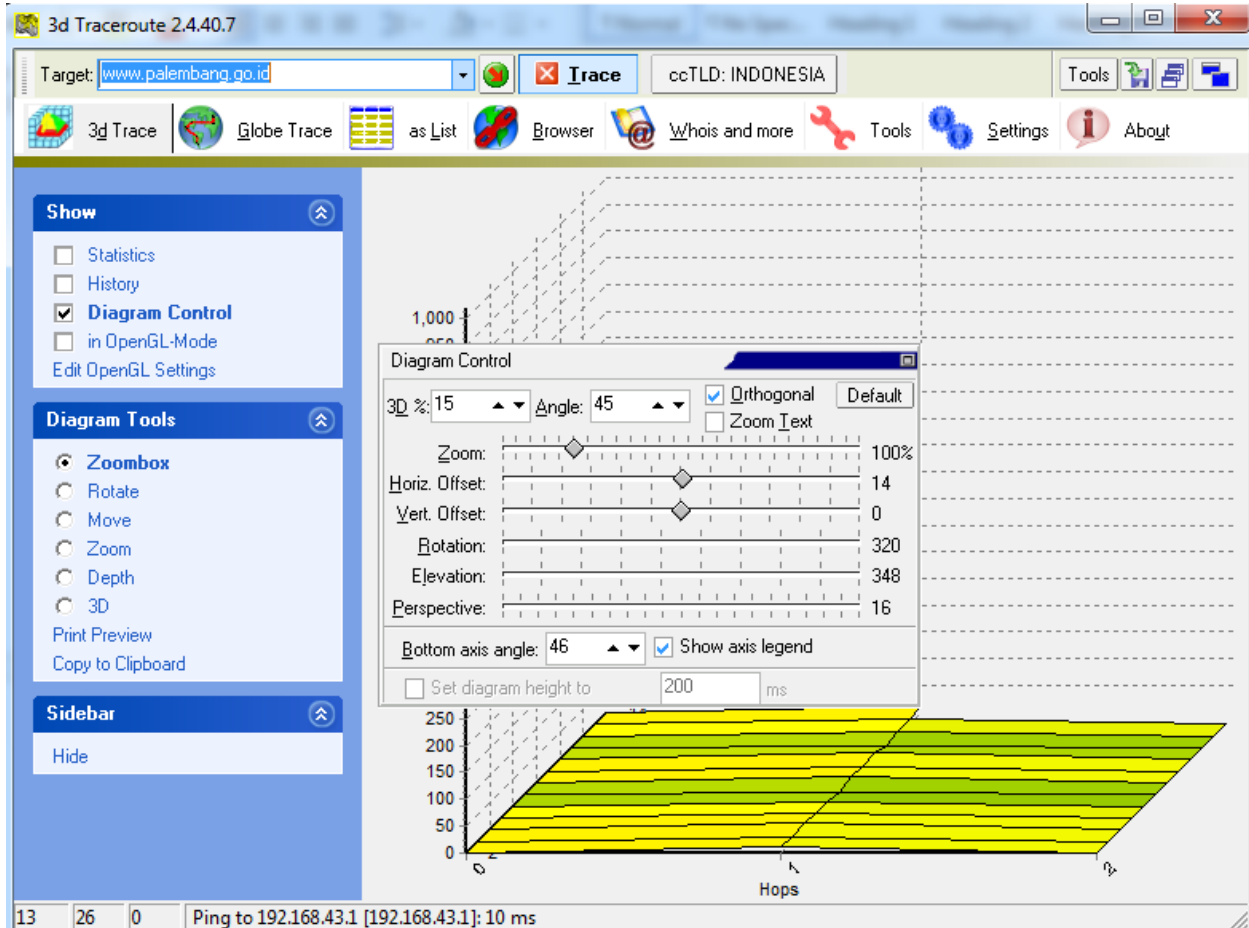
bgp AS17974

asname TELKOMNET-AS2-AP PT Telekomunikasi Indon

descr PT. Telekomunikasi Indonesia

location Indonesia

Menggunakan 3D traceroute



Pada website dalam negeri yaitu <http://www.palembang.go.id> lokasinya berada di indonesia.

Website luar negeri

Menggunakan <https://www.netcraft.com/>

1. Target :

<http://www.cnn.com>

Site	http://www.cnn.com	Netblock Owner	Fastly
Domain	cnn.com	Nameserver	ns-47.awsdns-05.com
IP address	151.101.17.67 (VirusTotal)	DNS admin	awsdns-hostmaster@amazon.com
IPv6 address	2a04:4e42:f:0:0:0:0:323	Reverse DNS	<i>unknown</i>
Domain registrar	corporatedomains.com	Nameserver organisation	whois.markmonitor.com
Organisation	Turner Broadcasting System, Inc., One CNN Center, Atlanta, 30303, US	Hosting company	<i>unknown</i>
Top Level Domain	Commercial entities (.com)	DNS Security Extensions	<i>unknown</i>
Hosting country	 US		

Last Reboot (54 days ago)

Hosting History

Netblock owner	IP address	OS	Web server	Last seen Refresh
Fastly PO Box 78266 San Francisco CA US 94107	151.101.61.67	Linux	Varnish	8-Feb-2019
Fastly PO Box 78266 San Francisco CA US 94107	151.101.17.67	Linux	Varnish	7-Feb-2019
Fastly PO Box 78266 San Francisco CA US 94107	151.101.61.67	Linux	Varnish	6-Feb-2019

Netblock owner	IP address	OS	Web server	Last seen Refresh
Fastly PO Box 78266 San Francisco CA US 94107	151.101.17.67	Linux	Varnish	6-Feb-2019
Fastly PO Box 78266 San Francisco CA US 94107	151.101.61.67	Linux	Varnish	4-Feb-2019
Fastly PO Box 78266 San Francisco CA US 94107	151.101.17.67	Linux	Varnish	3-Feb-2019
Fastly PO Box 78266 San Francisco CA US 94107	151.101.61.67	Linux	Varnish	31-Jan-2019
Fastly PO Box 78266 San Francisco CA US 94107	151.101.17.67	Linux	Varnish	30-Jan-2019
Fastly PO Box 78266 San Francisco CA US 94107	151.101.61.67	Linux	Varnish	27-Jan-2019
Fastly PO Box 78266 San Francisco CA US 94107	151.101.17.67	Linux	Varnish	26-Jan-2019

Menggunakan <https://www.robtext.com>

www.cnn.com quick info	
General	
FQDN	www.cnn.com
Host Name	www
Domain Name	cnn.com
Registry	com
TLD	com
Domain DNS	
Name servers	ns-47.awsdns-05.com ns-576.awsdns-08.net ns-1086.awsdns-07.org

	<u>ns-1630.awsdns-11.co.uk</u>
Mail servers	<u>mx-a-000c6b02.gslb.pphosted.com</u> <u>mx-b-000c6b02.gslb.pphosted.com</u>
IP Numbers	<u>2a04:4e42::323</u> <u>2a04:4e42:200::323</u> <u>2a04:4e42:400::323</u> <u>2a04:4e42:600::323</u> <u>151.101.1.67</u> <u>151.101.65.67</u> <u>151.101.129.67</u> <u>151.101.193.67</u>

- **Autonomous System Number (ASN)**

Www.cnn.com is a CNAME to turner-tls.map.fastly.net. Turner-tls.map.fastly.net has 18 IP numbers.

IP numbers

The IP numbers

are 2a04:4e42:2::323, 2a04:4e42:4::323, 2a04:4e42:7::323, 2a04:4e42:8::323, 2a04:4e42:a::323, 2a04:4e42:d::323, 2a04:4e42:15::323, 2a04:4e42:16::323, 2a04:4e42:2f::323, 151.101.9.67, 151.101.17.67, 151.101.29.67, 151.101.33.67, 151.101.41.67, 151.101.53.67, 151.101.89.67, 151.101.93.67 and 151.101.201.67. The IP numbers are in San Francisco, United States. They are hosted by Fastly.

We investigated five host names that cnames to www.cnn.com and 0 host names that cnames to turner-tls.map.fastly.net.

- **WHOIS**

whois Fastly (SKYCA-3)

Dari 18 ip number ada 9 ip number yang ada whoisnya.

www.cnn.com

cname turner-tls.map.fastly.net

a 2a04:4e42:2::323

route 2a04:4e42:2::/48

bgp AS54113

descr Fastly

2a04:4e42:4::323

route 2a04:4e42:4::/48

bgp AS54113

descr Fastly

2a04:4e42:7::323

route 2a04:4e42:7::/48

bgp AS54113

descr Fastly

2a04:4e42:8::323

route 2a04:4e42:8::/48

bgp AS54113

descr Fastly

2a04:4e42:a::323

route 2a04:4e42:a::/48

bgp AS54113

descr Fastly

2a04:4e42:d::323

route 2a04:4e42:d::/48

bgp AS54113

descr Fastly

2a04:4e42:15::323

route 2a04:4e42:15::/48

bgp AS54113

descr Fastly

2a04:4e42:16::323

route 2a04:4e42:16::/48

bgp AS54113

descr Fastly

2a04:4e42:2f::323

route 2a04:4e42:2f::/48

bgp AS54113

descr Fastly

151.101.9.67

whois Fastly (SKYCA-3)

route 151.101.8.0/22

bgp AS54113

descr Fastly

location San Francisco, United States

151.101.17.67

whois Fastly (SKYCA-3)

route 151.101.16.0/22

bgp AS54113

descr Fastly

location San Francisco, United States

151.101.29.67

whois Fastly (SKYCA-3)

route 151.101.28.0/22

bgp AS54113

descr Fastly

location San Francisco, United States

151.101.33.67

whois Fastly (SKYCA-3)

route 151.101.32.0/22

bgp AS54113

descr Fastly

location San Francisco, United States

151.101.41.67

whois Fastly (SKYCA-3)

route 151.101.40.0/22

bgp AS54113

descr Fastly

location San Francisco, United States

151.101.53.67

whois Fastly (SKYCA-3)

route 151.101.52.0/22

bgp AS54113

descr Fastly

location San Francisco, United States

151.101.89.67

whois Fastly (SKYCA-3)

route 151.101.88.0/22

bgp AS54113

descr Fastly

location San Francisco, United States

151.101.93.67

whois Fastly (SKYCA-3)

route 151.101.92.0/22

bgp AS54113

descr Fastly
location San Francisco, United States

151.101.201.67

whois Fastly (SKYCA-3)

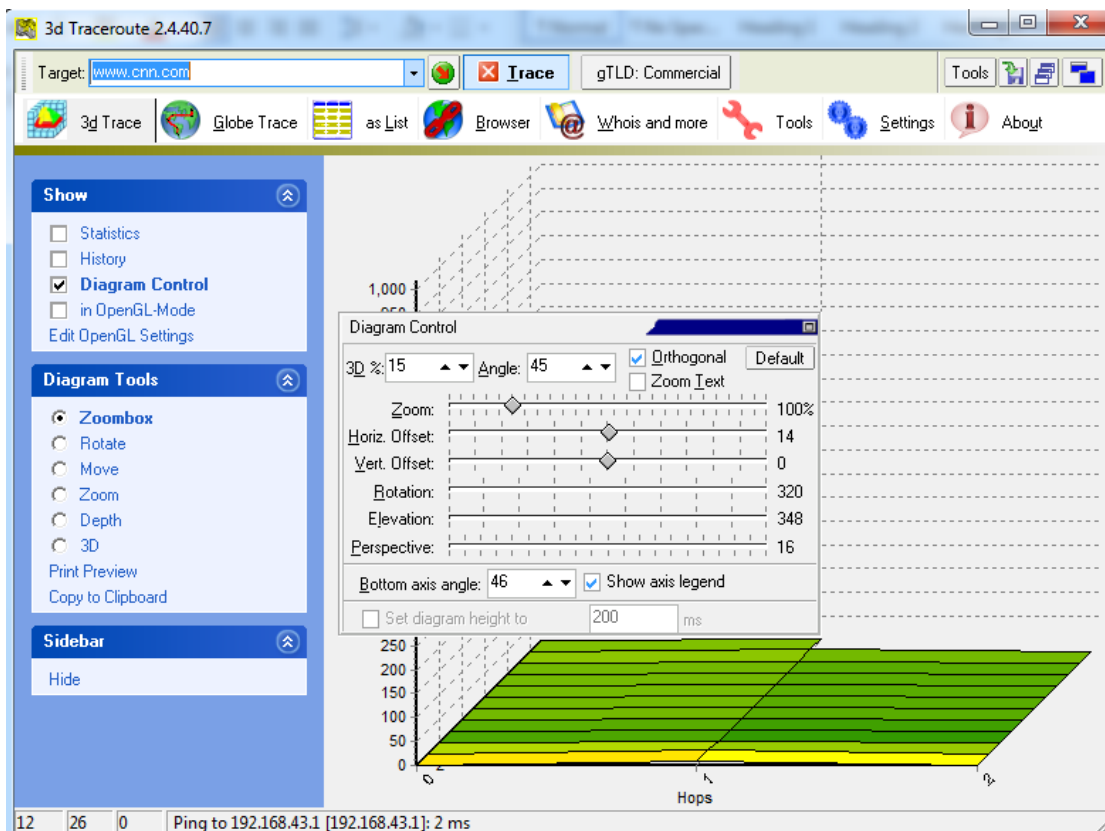
route 151.101.200.0/22

bgp AS54113

descr Fastly

location San Francisco, United States

Menggunakan 3D traceroute



Pada website luar negeri yaitu <http://www.cnn.com> lokasinya berada di San Francisco, United States.