

Task IV

Jaringan Komputer



Disusun Oleh :

Nama : Sigit Wijaya Pramono

Nim : 09011181419012

Kelas : SK.5A

Dosen Pengampuh : Dr. Deris Stiawan, M.T.

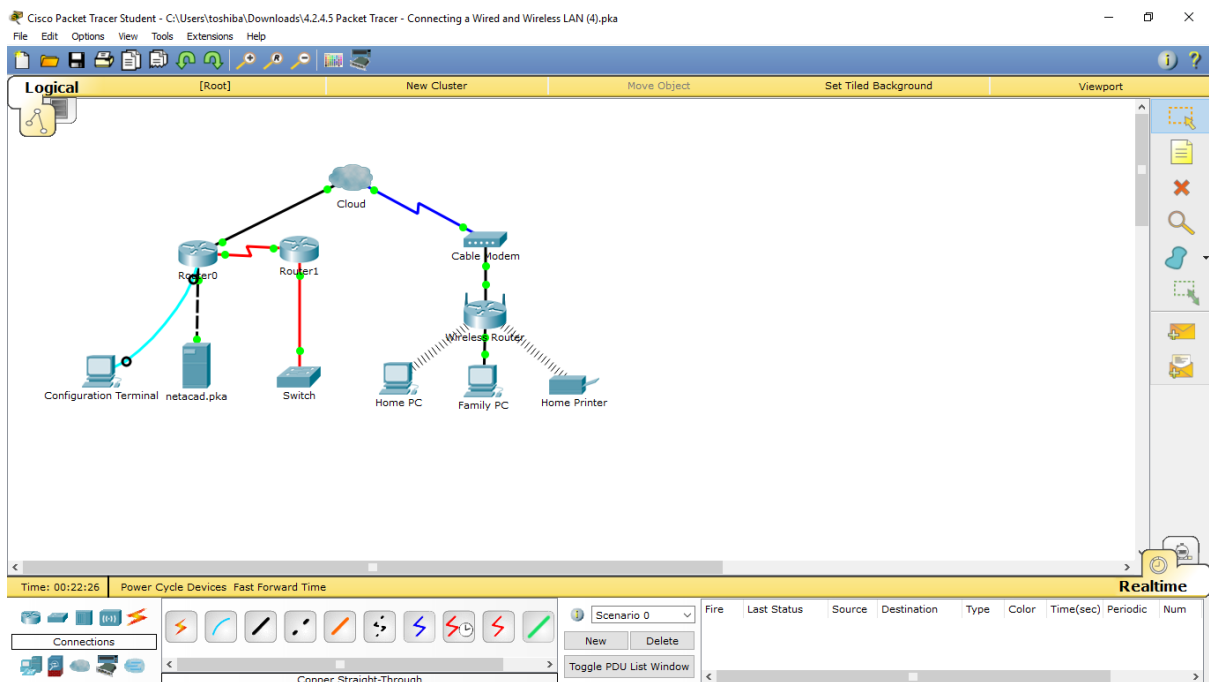
**JURUSAN SISTEM KOMPUTER
FAKULTAS ILMU KOMPUTER
UNIVERSITAS SRIWIJAYA
2016**

2.

<http://ccna.ilkom.unsri.ac.id/ciscover5/CCNAR&SIntroductiontoNetworks/course/files/4.2.4.5%20Packet%20Tracer%20-%20Connecting%20a%20Wired%20and%20Wireless%20LAN%20Instructions.pdf>

Jawaban :

Part 1, 2, & 3 :



Part 4 :

Step 1 : Test the connection from Family PC to netacad.pka

- a. Open the Family PC command prompt and ping netacad.pka

```
Command Prompt X
Packet Tracer PC Command Line 1.0
PC>ping netacad.pka
PC>ping netacad.pka
PC>ping netacad.pka

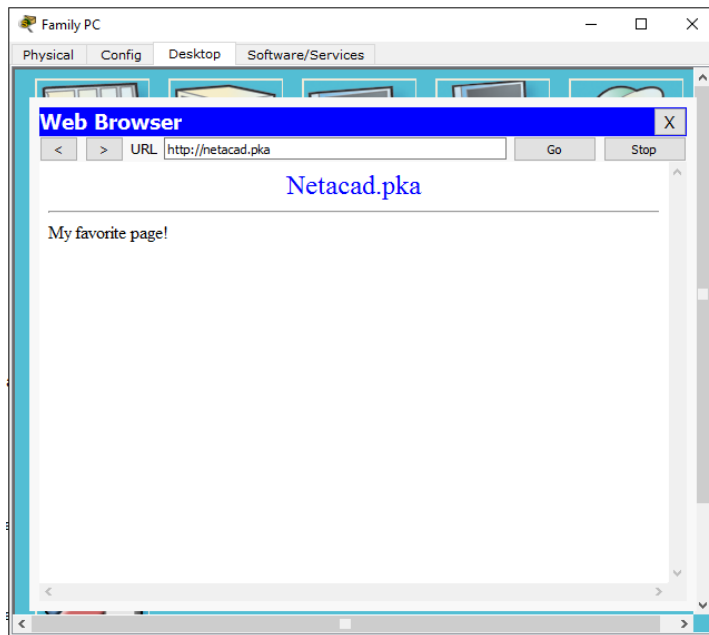
Pinging 10.0.0.254 with 32 bytes of data:

Reply from 10.0.0.254: bytes=32 time=12ms TTL=126
Reply from 10.0.0.254: bytes=32 time=15ms TTL=126
Reply from 10.0.0.254: bytes=32 time=24ms TTL=126
Reply from 10.0.0.254: bytes=32 time=12ms TTL=126

Ping statistics for 10.0.0.254:
    Packets: Sent = 4, Received = 4, Lost = 0 (0% loss),
    Approximate round trip times in milli-seconds:
        Minimum = 12ms, Maximum = 24ms, Average = 15ms

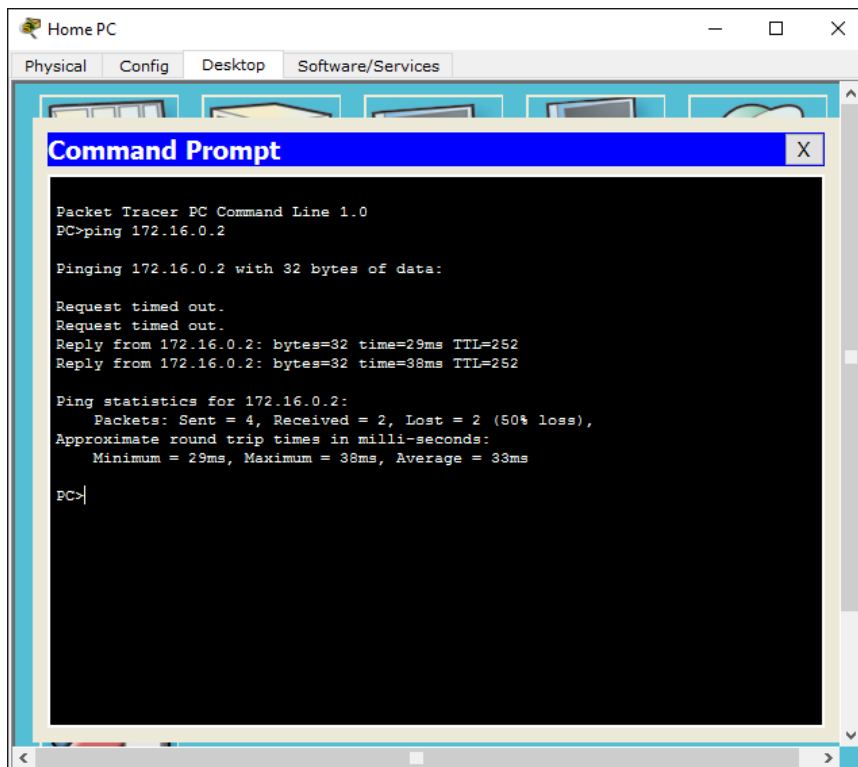
PC>
```

b. Open the Web Browser and the web address <http://netacad.pka>



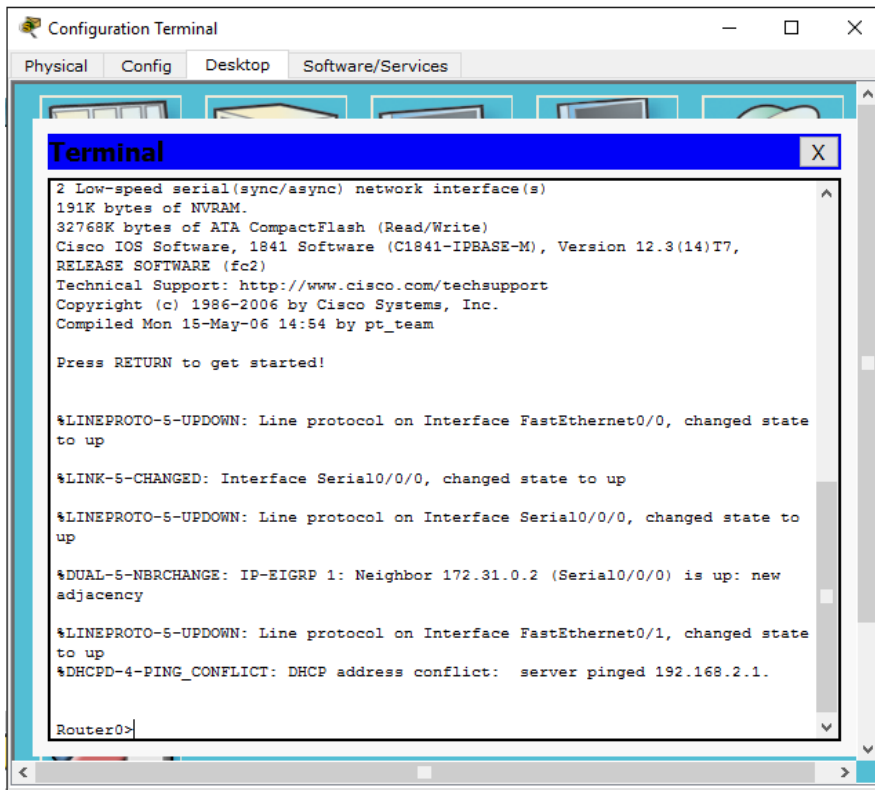
Step 2: Ping the Switch from Home PC

Open the Home PC command prompt and ping the Switch IP address of to verify the connection.



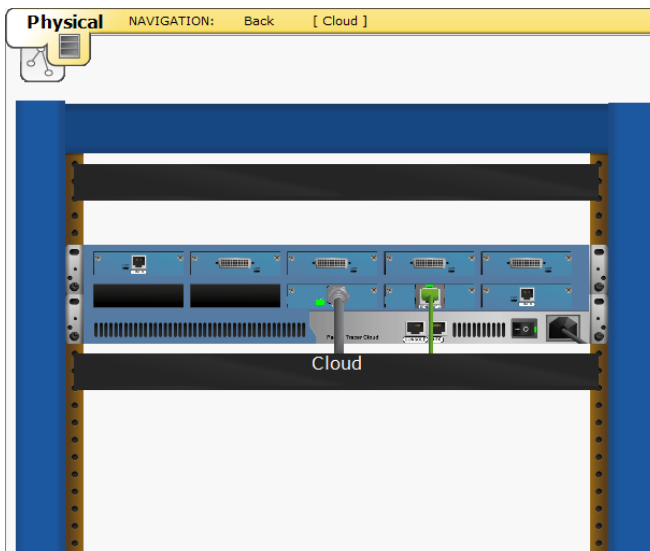
Step 3: Open Router0 from Configuration Terminal.

Type show ip interface brief to view interface statuses :



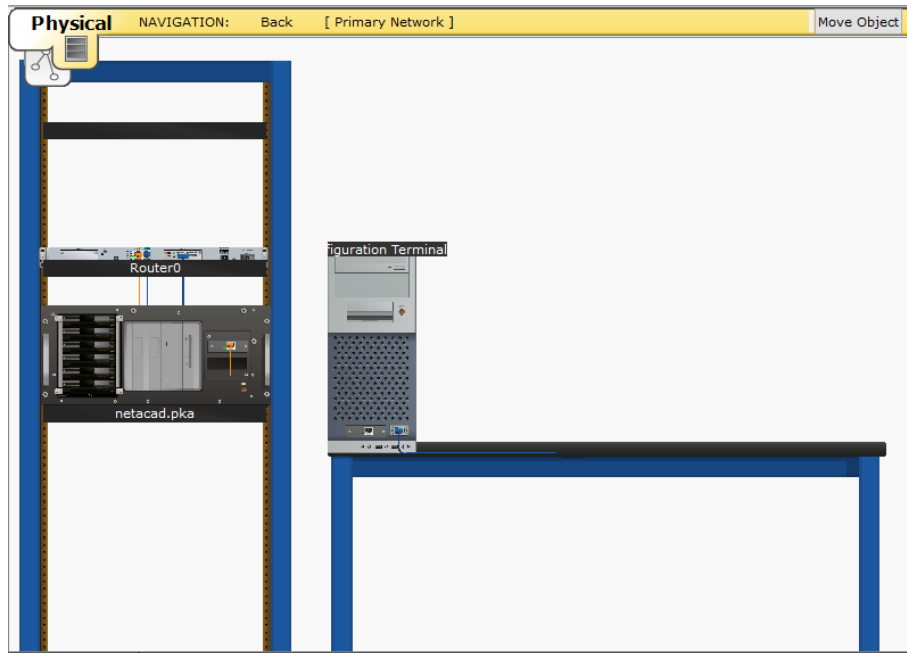
Part 5:

Step 1: Examine the Cloud.



- c. Banyak kabel yang tersambung ke switch di blue racks adalah 2 kabel.

Step 2: Examine the Primary Network.

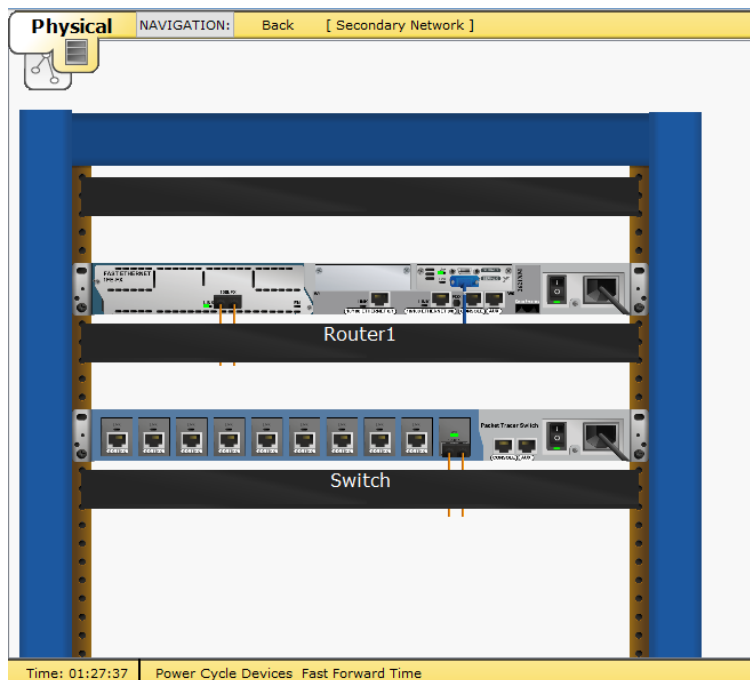


Yang berada di the table to the right of the blue rack adalah Configuration Terminal.

Step 3 : Examine the Secondary Network.

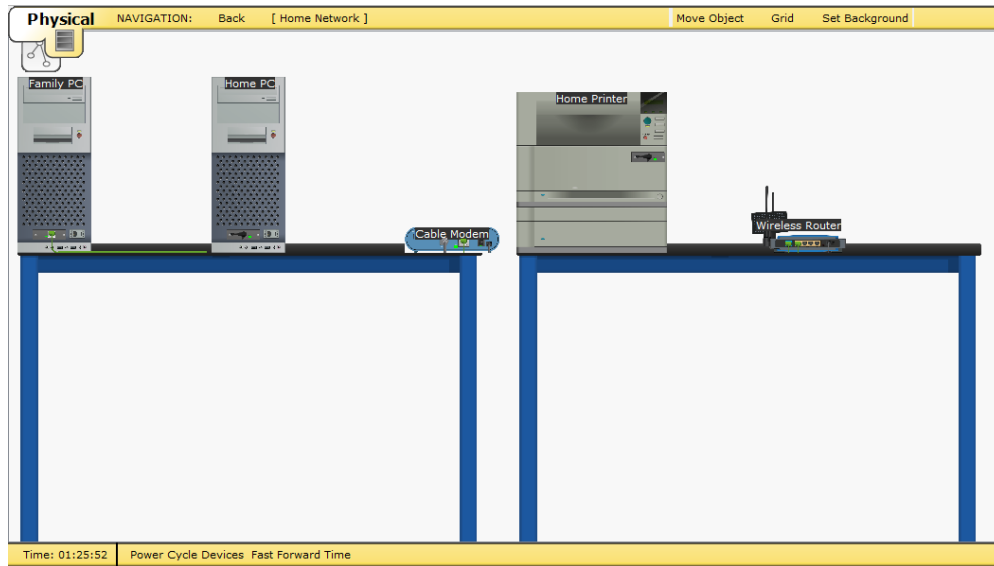
a. Click the Secondary Network icon. Hold the mouse pointer over the various cables.

Why are there two orange cables connected to each device ?



- Kabel serat ada berpasangan, satu untuk mengirimkan, yang lain untuk menerima.

b. Click the Home Network icon. Why is there no rack to hold the equipment?



- karena jaringan rumah biasanya tidak memiliki rak.