

TUGAS II
JARINGAN KOMPUTER

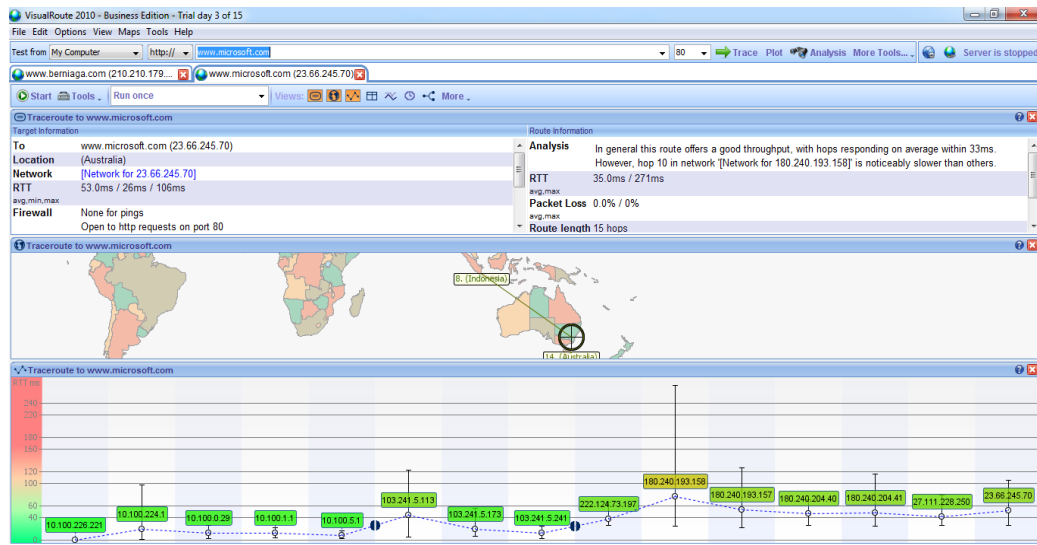


DISUSUN OLEH:

NAMA : ARUM CANTIKA PUTRI
NIM : 09011181419022
KELAS : SK 5 A
DOSEN : Dr. DERIS STIAWAN, M.T., Ph.D.

FAKULTAS ILMU KOMPUTER
JURUSAN SISTEM KOMPUTER
UNIVERSITAS SRIWIJAYA

Untuk analisa ini saya memilih untuk mengcapture website microsoft.com dan berniaga.com menggunakan bantuan visual route. Serta menggunakan bantuan network-tools.com untuk menemukan IP siapa saja yang berada dalam ke dua capture tersebut. Pada website **Microsoft.com** sendiri dapat dilihat capturenya di bawah ini yang mana lokasinya ada di **Australia**.



Beberapa IP tidak dapat saya lihat rinciannya karena jaringan tidak terjangkau

1. 10.100.226.221
2. 10.100.224.1
3. 10.100.0.29
4. 10.100.1.1
5. 10.100.5.1

Seperti ini salah satu contohnya:

Lookup failed: 10.100.226.221 No data

10.100.226.221 is from Other (XX) in region Unclassified

TraceRoute from Network-Tools.com to 10.100.226.221

Hop	(ms)	(ms)	(ms)	IP Address	Host name
-----	------	------	------	------------	-----------

1	Timed out	Timed out	Timed out
-			
2	Timed out	Timed out	Destination network unreachable
-			
3	Destination network unreachable	Destination network unreachable	Destination network unreachable
4	Destination network unreachable	Destination network unreachable	Destination network unreachable

6. Pada ip 103.241.5.113 saya bisa melihat siapa saja yang mengakses Microsoft.com yang tercantum pada host name contohnya 173-219-246-92.suddenlink.net

103.241.5.113 is from Indonesia (ID) in region Southern and Eastern Asia

Input: 103.241.5.113

canonical name: host-103.241.5.113.unsri.ac.id

Registered Domain: unsri.ac.id

TraceRoute from Network-Tools.com to 103.241.5.113 [host-103.241.5.113.unsri.ac.id]

Hop	(ms)	(ms)	(ms)	IP Address	Host name
1	1	0	0	206.123.64.233	-
2	1	1	1	173.219.246.92	173-219-246-92.suddenlink.net
3	69	59	52	173.219.225.56	173-219-225-56.suddenlink.net
4	2	1	1	38.140.104.225	be4714.ccr41.dfw03.atlas.cogentco.com
5	1	1	1	154.54.28.73	be2763.ccr21.dfw01.atlas.cogentco.com
6	6	6	6	154.54.41.65	be2441.ccr21.iah01.atlas.cogentco.com
7	34	34	34	154.54.29.222	be2927.ccr21.elp01.atlas.cogentco.com

8	35	34	35	154.54.42.65	
be2929.ccr21.phx02.atlas.cogentco.com					
9	35	34	34	154.54.44.86	
be2931.ccr21.lax01.atlas.cogentco.com					
10	37	37	37	154.54.44.78	
be2964.ccr41.lax04.atlas.cogentco.com					
11	207	208	207	38.104.83.210	-
12	236	218	218	180.240.192.73	-
13	209	209	208	180.240.193.234	-
14	213	210	210	222.124.73.197	197.subnet222-124-73.p2p.telkom.net.id
15	228	228	227	222.124.73.198	198.subnet222-124-73.p2p.telkom.net.id
16	245	227	245	103.241.5.244	r2-idl.unsri.ac.id
17	248	230	231	103.241.5.113	host-103.241.5.113.unsri.ac.id

Trace complete

7. Pada ip 103.241.5.173 saya dapat mengetahui IP yang berada pada capture ini

103.241.5.173 is from Indonesia (ID) in region Southern and Eastern Asia

Input: 103.241.5.173

canonical name: noc-idl.unsri.ac.id

Registered Domain: unsri.ac.id

TraceRoute from Network-Tools.com to 103.241.5.173 [noc-idl.unsri.ac.id]

Hop	(ms)	(ms)	(ms)	IP Address	Host name
1	34	0	0	206.123.64.233	-
2	1	1	1	173.219.246.92	173-219-246-92.suddenlink.net

3	92	79	72	173.219.230.155	173-219-230-155.suddenlink.net
4	21	21	22	213.248.90.101	dls-bb1-link.telia.net
5	54	55	54	80.91.254.169	las-b21-link.telia.net
6	200	200	200	62.115.121.193	hnk-b2-link.telia.net
7	Timed out	Timed out	Timed out	-	-
8	230	223	217	180.240.190.81	-
9	220	218	216	180.240.193.234	-
10	216	222	216	180.240.193.234	-
11	218	218	218	222.124.73.197	197.subnet222-124-73.p2p.telkom.net.id
12	237	234	234	222.124.73.198	198.subnet222-124-73.p2p.telkom.net.id
13	234	237	237	103.241.5.173	noc-idl.unsri.ac.id

Trace complete

8. Untuk IP 103.241.5.241

103.241.5.241 is from Indonesia (ID) in region Southern and Eastern Asia

Input: 103.241.5.241

canonical name: ip-241-5.unsri.ac.id

Registered Domain: unsri.ac.id

TraceRoute from Network-Tools.com to 103.241.5.241 [ip-241-5.unsri.ac.id]

Hop	(ms)	(ms)	(ms)	IP Address	Host name
1	1	0	0	206.123.64.233	-
2	1	1	1	173.219.246.92	173-219-246-92.suddenlink.net
3	96	86	89	173.219.225.56	173-219-225-56.suddenlink.net

4	1	1	1	38.140.104.225	
be4714.ccr41.dfw03.atlas.cogentco.com					
5	1	1	1	154.54.47.213	
be2764.ccr22.dfw01.atlas.cogentco.com					
6	6	6	6	154.54.44.229	
be2443.ccr22.iah01.atlas.cogentco.com					
7	34	35	34	154.54.30.162	
be2928.ccr21.elp01.atlas.cogentco.com					
8	34	35	35	154.54.42.77	
be2930.ccr22.phx02.atlas.cogentco.com					
9	35	35	35	154.54.45.162	
be2932.ccr22.lax01.atlas.cogentco.com					
10	38	37	37	154.54.45.2	
be2965.ccr41.lax04.atlas.cogentco.com					
11	208	208	207	38.104.83.210	-
12	236	236	231	180.240.192.73	-
13	210	208	208	180.240.193.234	-
14	213	210	210	222.124.73.197	197.subnet222-124-73.p2p.telkom.net.id
15	246	229	230	103.241.5.241	ip-241-5.unsri.ac.id

Trace complete

9. Untuk IP 222.124.73.197 yaitu

222.124.73.197 is from Indonesia (ID) in region Southern and Eastern Asia

Input: 222.124.73.197

canonical name: 197.subnet222-124-73.p2p.telkom.net.id

Registered Domain: telkom.net.id

TraceRoute from Network-Tools.com to 222.124.73.197 [197.subnet222-124-73.p2p.telkom.net.id]

Hop	(ms)	(ms)	(ms)	IP Address	Host name
1	1	0	0	206.123.64.221	-
2	2	1	0	4.15.32.133	lag-127.ear1.dallas1.level3.net
3	32	32	32	4.69.144.202	ae-4-90.edge1.losangeles9.level3.net
4	32	32	32	4.69.144.202	ae-4-90.edge1.losangeles9.level3.net
5	32	32	32	4.53.228.154	pt.telekomu.edge1.losangeles9.level3.net
6	210	214	209	180.240.192.37	-
7	219	219	219	61.94.117.129	-
8	227	227	227	118.98.2.90	-
9	Timed out	Timed out	Timed out	Timed out	-
10	Timed out	Timed out	Timed out	Timed out	-
11	232	232	232	222.124.73.198	198.subnet222-124-73.p2p.telkom.net.id
12	232	232	232	222.124.73.197	197.subnet222-124-73.p2p.telkom.net.id

Trace complete

10. Untuk IP 180.240.193.158 yaitu

Lookup failed: 180.240.193.158 No data

180.240.193.158 is from Singapore (SG) in region Southern and Eastern Asia

TraceRoute from Network-Tools.com to 180.240.193.158

Hop	(ms)	(ms)	(ms)	IP Address	Host name
1	1	0	0	206.123.64.221	-
2	1	1	2	129.250.202.253	xe-0-4-0-12.r01.dllstx04.us.bb.gin.ntt.net
3	1	1	1	129.250.6.128	ae-2.r23.dllstx09.us.bb.gin.ntt.net
4	39	39	41	129.250.4.154	ae-8.r23.snjsca04.us.bb.gin.ntt.net
5	38	38	38	129.250.2.182	ae-0.r22.snjsca04.us.bb.gin.ntt.net
6	212	212	227	129.250.3.49	ae-2.r20.sngpsi05.sg.bb.gin.ntt.net
7	219	219	219	129.250.3.147	ae-2.r00.sngpsi02.sg.bb.gin.ntt.net
8	223	312	223	116.51.17.226	xe-0-1-0-4.r00.sngpsi02.sg.ce.gin.ntt.net
9	214	213	243	180.240.204.54	-
10	212	212	212	180.240.204.54	-
11	209	209	209	180.240.193.158	-

Trace complete

11. Pada 180.240.193.157 dapat melihat yang mengakses sebagai berikut

Lookup failed: 180.240.193.157 No data

180.240.193.157 is from Singapore (SG) in region Southern and Eastern Asia

TraceRoute from Network-Tools.com to 180.240.193.157

Hop	(ms)	(ms)	(ms)	IP Address	Host name
1	1	0	0	206.123.64.221	-

2	1	1	1	129.250.202.253	xe-0-4-0-
12.r01.dllstx04.us.bb.gin.ntt.net					
3	8	1	1	129.250.6.128	ae-
2.r23.dllstx09.us.bb.gin.ntt.net					
4	39	39	39	129.250.4.154	ae-
8.r23.snjsca04.us.bb.gin.ntt.net					
5	37	37	38	129.250.2.182	ae-
0.r22.snjsca04.us.bb.gin.ntt.net					
6	213	213	213	129.250.3.49	ae-
2.r20.sngpsi05.sg.bb.gin.ntt.net					
7	220	220	220	129.250.3.147	ae-
2.r00.sngpsi02.sg.bb.gin.ntt.net					
8	225	225	225	116.51.26.34	-
9	222	226	222	180.240.193.157	-

Trace complete

12. Pada IP 180.240.40 dapat melihat yang mengakses yaitu

Lookup failed: 180.240.204.40 No data

180.240.204.40 is from Singapore (SG) in region Southern and Eastern Asia

TraceRoute from Network-Tools.com to 180.240.204.40

Hop	(ms)	(ms)	(ms)	IP Address	Host name
1	1	0	0	206.123.64.233	-
2	1	1	1	129.250.202.253	xe-0-4-0-
12.r01.dllstx04.us.bb.gin.ntt.net					
3	1	1	1	129.250.6.128	ae-
2.r23.dllstx09.us.bb.gin.ntt.net					
4	39	39	39	129.250.4.154	ae-
8.r23.snjsca04.us.bb.gin.ntt.net					
5	38	37	37	129.250.2.182	ae-
0.r22.snjsca04.us.bb.gin.ntt.net					

6	226	224	224	129.250.3.49	ae-
2.r20.sngpsi05.sg.bb.gin.ntt.net					
7	231	231	231	129.250.3.147	ae-
2.r00.sngpsi02.sg.bb.gin.ntt.net					
8	236	236	236	116.51.26.34	-
9	219	219	220	180.240.204.40	-

Trace complete

13. Pada IP 180.240.204.41 dapat melihat yang mengakses yaitu

Lookup failed: 180.240.204.41 No data

180.240.204.41 is from Singapore (SG) in region Southern and Eastern Asia

TraceRoute from Network-Tools.com to 180.240.204.41

Hop	(ms)	(ms)	(ms)	IP Address	Host name
1	1	0	0	206.123.64.233	-
2	2	1	1	129.250.202.253	xe-0-4-0-12.r01.dllstx04.us.bb.gin.ntt.net
3	1	1	1	129.250.6.128	ae-2.r23.dllstx09.us.bb.gin.ntt.net
4	39	39	39	129.250.4.154	ae-8.r23.snjsca04.us.bb.gin.ntt.net
5	37	37	37	129.250.2.182	ae-0.r22.snjsca04.us.bb.gin.ntt.net
6	219	212	212	129.250.3.49	ae-2.r20.sngpsi05.sg.bb.gin.ntt.net
7	219	219	219	129.250.3.147	ae-2.r00.sngpsi02.sg.bb.gin.ntt.net
8	217	208	235	180.240.204.41	-

Trace complete

14. Untuk IP 23.66.245.70 yaitu

23.66.245.70 is from United States (US) in region North America

Input: 23.66.245.70

canonical name: a23-66-245-70.deploy.static.akamaitechnologies.com

Registered Domain: akamaitechnologies.com

TraceRoute from Network-Tools.com to 23.66.245.70 [a23-66-245-70.deploy.static.akamaitechnologies.com]

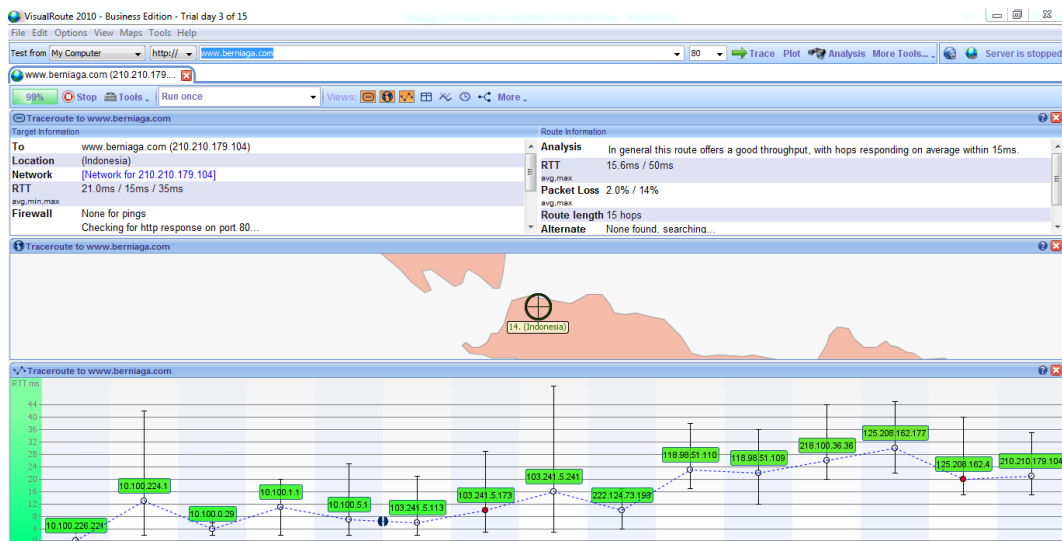
Hop	(ms)	(ms)	(ms)	IP Address	Host name
1	1	0	0	206.123.64.233	-
2	0	0	0	206.123.64.45	-
3	1	1	0	64.124.196.225	xe-4-2-0.er2.dfw2.us.above.net
4	1	0	1	64.125.20.233	ae7.cr2.dfw2.us.zip.zayo.com
5	27	27	27	64.125.30.182	ae27.cs2.dfw2.us.eth.zayo.com
6	28	27	27	64.125.29.21	ae3.cs2.lax112.us.eth.zayo.com
7	38	38	38	64.125.30.187	ae27.cr2.lax112.us.zip.zayo.com
8	Timed out	Timed out	Timed out		-
9	27	27	27	203.208.151.100	-
10	27	27	27	203.208.171.117	-
11	28	28	199	203.208.173.161	-
12	200	190	187	203.208.151.233	-
13	222	211	201	203.208.177.162	-

14 187 188 196 23.66.245.70 a23-66-245-70.deploy.static.akamaitechnologies.com

Trace complete

Capture di bawah, dengan Region **Indonesia** saya memilih website

Berniaga.com



Pada website Indonesia saya juga memiliki permasalahan yang sama yaitu jaringan tidak terjangkau pada IP

1. 10.100.226.221
2. 10.100.224.1
3. 10.100.0.29
4. 10.100.1.1
5. 10.100.5.1

Dengan salah satu contoh seperti di bawah ini:

Hop	(ms)	(ms)	(ms)	IP Address	Host name
1	Destination network unreachable	Destination network unreachable	Destination network unreachable		
2	Destination network unreachable	Timed out			

3	Timed out	Timed out	Timed out	-
4	Destination network unreachable	Destination network unreachable	Destination network unreachable	-
5	Destination network unreachable	Destination network unreachable	Destination network unreachable	-
6	Destination network unreachable	Destination network unreachable	Destination network unreachable	-
7	Destination network unreachable	Timed out	-	Destination network unreachable
8	Timed out	Timed out	Timed out	-
9	Timed out	Timed out	Timed out	-
10	Destination network unreachable	Destination network unreachable	Destination network unreachable	-
11	Destination network unreachable	Destination network unreachable	Destination network unreachable	-
12	Destination network unreachable	Destination network unreachable	Destination network unreachable	-
13	Destination network unreachable	Timed out	-	Destination network unreachable
14	Timed out	Timed out	Timed out	-

Trace aborted.

6. Untuk IP 103.241.5.113 yaitu

103.241.5.113 is from Indonesia (ID) in region Southern and Eastern Asia

Input: 103.241.5.113

canonical name: host-103.241.5.113.unsri.ac.id

Registered Domain: unsri.ac.id

TraceRoute from Network-Tools.com to 103.241.5.113 [host-103.241.5.113.unsri.ac.id]

Hop	(ms)	(ms)	(ms)	IP Address	Host name
1	1	0	0	206.123.64.233	-
2	1	1	1	173.219.246.92	173-219-246-92.suddenlink.net
3	83	90	86	173.219.225.56	173-219-225-56.suddenlink.net
4	1	1	1	38.140.104.225	be4714.ccr41.dfw03.atlas.cogentco.com
5	1	1	1	154.54.28.73	be2763.ccr21.dfw01.atlas.cogentco.com
6	6	6	6	154.54.41.65	be2441.ccr21.iah01.atlas.cogentco.com
7	Timed out		34 37	154.54.29.222	be2927.ccr21.elp01.atlas.cogentco.com
8	45	Timed out	45	154.54.42.65	be2929.ccr21.phx02.atlas.cogentco.com
9	34	34	35	154.54.44.86	be2931.ccr21.lax01.atlas.cogentco.com
10	37	42	48	154.54.44.78	be2964.ccr41.lax04.atlas.cogentco.com
11	208	208	208	38.104.83.210	-
12	218	218	218	180.240.192.73	-
13	211	208	208	180.240.193.234	-
14	229	210	210	222.124.73.197	197.subnet222-124-73.p2p.telkom.net.id
15	226	226	226	222.124.73.198	198.subnet222-124-73.p2p.telkom.net.id
16	227	245	229	103.241.5.244	r2-idl.unsri.ac.id
17	229	246	229	103.241.5.113	host-103.241.5.113.unsri.ac.id

Trace complete

7. Pada IP 103.241.5.173 adalah

103.241.5.173 is from Indonesia (ID) in region Southern and Eastern Asia

Input: 103.241.5.173

canonical name: noc-idl.unsri.ac.id

Registered Domain: unsri.ac.id

TraceRoute from Network-Tools.com to 103.241.5.173 [noc-idl.unsri.ac.id]

Hop	(ms)	(ms)	(ms)	IP Address	Host name
1	1	0	0	206.123.64.233	-
2	1	1	1	173.219.246.92	173-219-246-92.suddenlink.net
3	296	308	291	173.219.230.155	173-219-230-155.suddenlink.net
4	22	22	22	213.248.90.101	dls-bb1-link.telias.net
5	54	53	56	80.91.254.169	las-b21-link.telias.net
6	238	238	238	62.115.121.193	hnk-b2-link.telias.net
7	Timed out	Timed out	238	62.115.56.150	telin-ic-313116-hnk-b2.c.telias.net
8	222	223	223	180.240.190.113	-
9	219	229	216	180.240.193.234	-
10	222	218	216	180.240.193.234	-
11	218	234	234	222.124.73.198	198.subnet222-124-73.p2p.telkom.net.id
12	236	237	235	103.241.5.173	noc-idl.unsri.ac.id

Trace complete

8. Pada IP 103.241.5.241 dapat melihat yang mengakses yaitu

103.241.5.241 is from Indonesia (ID) in region Southern and Eastern Asia

Input: 103.241.5.241

canonical name: ip-241-5.unsri.ac.id

Registered Domain: unsri.ac.id

TraceRoute from Network-Tools.com to 103.241.5.241 [ip-241-5.unsri.ac.id]

Hop	(ms)	(ms)	(ms)	IP Address	Host name
1	1	0	0	206.123.64.233	-
2	1	1	1	173.219.246.92	173-219-246-92.suddenlink.net
3	337	332	Timed out	173.219.225.56	173-219-225-56.suddenlink.net
4	1	1	2	38.140.104.225	be4714.ccr41.dfw03.atlas.cogentco.com
5	1	1	1	154.54.47.213	be2764.ccr22.dfw01.atlas.cogentco.com
6	6	6	6	154.54.44.229	be2443.ccr22.iah01.atlas.cogentco.com
7	35	35	35	154.54.30.162	be2928.ccr21.elp01.atlas.cogentco.com
8	35	34	34	154.54.42.77	be2930.ccr22.phx02.atlas.cogentco.com
9	34	34	35	154.54.45.162	be2932.ccr22.lax01.atlas.cogentco.com
10	37	37	37	154.54.45.2	be2965.ccr41.lax04.atlas.cogentco.com
11	210	208	208	38.104.83.210	-
12	235	218	218	180.240.192.73	-

13	226	208	225	180.240.193.234	-
14	212	210	227	222.124.73.197	197.subnet222-124-73.p2p.telkom.net.id
15	228	229	230	103.241.5.241	ip-241-5.unsri.ac.id

Trace complete

9. Pada IP 222.124.73.193 beberapa rincian tidak dapat terdeteksi

222.124.73.193 is from Indonesia (ID) in region Southern and Eastern Asia

Input: 222.124.73.193

canonical name: 193.subnet222-124-73.p2p.telkom.net.id

Registered Domain: telkom.net.id

TraceRoute from Network-Tools.com to 222.124.73.193 [193.subnet222-124-73.p2p.telkom.net.id]

Hop	(ms)	(ms)	(ms)	IP Address	Host name
1	1	0	0	206.123.64.221	-
2	Timed out	Timed out	Timed out	Timed out	-
3	32	32	32	4.69.144.138	ae-3-80.edge1.losangeles9.level3.net
4	33	32	32	4.69.144.138	ae-3-80.edge1.losangeles9.level3.net
5	31	31	35	4.53.228.154	pt.telekomu.edge1.losangeles9.level3.net
6	209	209	210	180.240.192.37	-
7	216	219	219	61.94.117.129	-
8	Timed out	Timed out	Timed out	Timed out	-
9	Timed out	Timed out	Timed out	Timed out	-

10	Timed out	Timed out	Timed out	-
11	Timed out	Timed out	Timed out	-
12	Timed out	Timed out	Timed out	-
13	Timed out	Timed out	Timed out	-
14	Timed out	Timed out	Timed out	-
15	Timed out	Timed out	Timed out	-

10. Pada 118.96.51.110 dapat melihat siapa yang mengakses

118.96.51.110 is from Indonesia (ID) in region Southern and Eastern Asia

Input: 118.96.51.110

canonical name: 110.static.118-96-51.astinet.telkom.net.id

Registered Domain: telkom.net.id

TraceRoute from Network-Tools.com to 118.96.51.110 [110.static.118-96-51.astinet.telkom.net.id]

Hop	(ms)	(ms)	(ms)	IP Address	Host name
1	1	0	0	206.123.64.233	-
2	Timed out	Timed out	Timed out	Timed out	-
3	32	32	32	4.69.144.138	ae-3-80.edge1.losangeles9.level3.net
4	32	32	32	4.69.144.138	ae-3-80.edge1.losangeles9.level3.net
5	32	32	36	4.53.228.154	pt.telekomu.edge1.losangeles9.level3.net
6	210	210	210	180.240.192.37	-
7	213	211	211	180.240.193.126	-
8	229	230	230	61.94.171.69	-

9	Timed out	227	227	61.94.171.70	-
10	Timed out	Timed out	Timed out		-
11	Timed out	Timed out	Timed out		-
12	Timed out	Timed out	Timed out		-
13	Timed out	Timed out	Timed out		-
14	Timed out	Timed out	Timed out		-
15	Timed out	Timed out	Timed out		-
16	Timed out	Timed out	Timed out		-
17	Timed out	Timed out	Timed out		-
18	Timed out	Timed out	Timed out		-
19	Timed out	Timed out	Timed out		-
20	Timed out	Timed out	Timed out		-
21	Timed out	Timed out	Timed out		-
22	Timed out	Timed out	Timed out		-
23	Timed out	Timed out	Timed out		-

Trace aborted.

11. Pada IP 118.98.51.109 dapat melihat siapa yang mengakses yaitu

118.98.51.109 is from Indonesia (ID) in region Southern and Eastern Asia

Input: 118.98.51.109

canonical name: 109.subnet118-98-51.astinet.telkom.net.id

Registered Domain: telkom.net.id

TraceRoute from Network-Tools.com to 118.98.51.109 [109.subnet118-98-51.astinet.telkom.net.id]

Hop	(ms)	(ms)	(ms)	IP Address	Host name
1	1	0	0	206.123.64.233	-
2	Timed out	Timed out	Timed out	Timed out	-
3	32	32	32	4.69.144.138	ae-3-80.edge1.losangeles9.level3.net
4	32	32	32	4.69.144.138	ae-3-80.edge1.losangeles9.level3.net
5	32	32	32	4.53.228.154	pt.telekomu.edge1.losangeles9.level3.net
6	210	210	226	180.240.192.37	-
7	218	219	219	61.94.117.125	-
8	228	228	228	118.98.2.90	-
9	Timed out	Timed out	Timed out	Timed out	-
10	Timed out	Timed out	Timed out	Timed out	-
11	Timed out	Timed out	Timed out	Timed out	-
12	Timed out	Timed out	Timed out	Timed out	-
13	Timed out	Timed out	Timed out	Timed out	-
14	Timed out	Timed out	Timed out	Timed out	-
15	Timed out	Timed out	Timed out	Timed out	-

12. Pada IP 218.100.36.36 tidak dapat melihat siapa yang mengakses

218.100.36.36 is from Australia (AU) in region Oceania

Input: 218.100.36.36

canonical name: cbn.openixp.net

Registered Domain: openixp.net

TraceRoute from Network-Tools.com to 218.100.36.36 [cbn.openixp.net]

Hop	(ms)	(ms)	(ms)	IP Address	Host name
1	Destination network unreachable	Destination network unreachable	Destination network unreachable	Destination network unreachable	-
2	Destination network unreachable	Destination network unreachable	Destination network unreachable	Destination network unreachable	-
3	Destination network unreachable	Destination network unreachable	Destination network unreachable	Destination network unreachable	-
4	Destination network unreachable	Destination network unreachable	Destination network unreachable	Timed out	Timed out
-					
5	Timed out	Timed out	Timed out	Timed out	-
6	Timed out	Timed out	Timed out	Destination network unreachable	-
-					
7	Destination network unreachable	Destination network unreachable	Destination network unreachable	Destination network unreachable	-
8	Destination network unreachable	Destination network unreachable	Destination network unreachable	Destination network unreachable	-
9	Destination network unreachable	Destination network unreachable	Destination network unreachable	Destination network unreachable	-
10	Destination network unreachable	Timed out	Timed out	-	-
11	Timed out	Timed out	Timed out	Timed out	-
12	Timed out	Timed out	Timed out	Timed out	-
13	Destination network unreachable	Destination network unreachable	Destination network unreachable	Destination network unreachable	-
14	Destination network unreachable	Destination network unreachable	Destination network unreachable	Destination network unreachable	-

Trace aborted.

13. Untuk IP 125.208.162.177 dapat melihat siapa yang mengakses

125.208.162.177 is from Indonesia (ID) in region Southern and Eastern Asia

Input: 125.208.162.177

canonical name: 125.208.162.177.cbn.net.id

Registered Domain: cbn.net.id

TraceRoute from Network-Tools.com to 125.208.162.177
[125.208.162.177.cbn.net.id]

Hop	(ms)	(ms)	(ms)	IP Address	Host name
1	23	0	0	206.123.64.221	-
2	Timed out	Timed out	Timed out	Timed out	-
3	Timed out	Timed out	Timed out	1 4.69.210.145	ae-8-0.ear3.dallas1.level3.net
4	22	24	22	62.115.52.221	dls-b21-link.telia.net
5	54	54	54	62.115.139.9	las-b21-link.telia.net
6	221	221	221	62.115.116.40	sjo-b21-link.telia.net
7	222	222	222	62.115.114.41	sng-e-b1-link.telia.net
8	Timed out	Timed out	Timed out	Timed out	-
9	223	224	223	121.100.5.234	-
10	233	232	233	121.100.4.82	-
11	231	231	239	202.158.127.131	ip127-131.cbn.net.id
12	228	226	226	125.208.162.177	125.208.162.177.cbn.net.id

Trace complete

14. Pada IP 125.208.162.4 dapat melihat siapa yang mengakses yaitu

125.208.162.4 is from Indonesia (ID) in region Southern and Eastern Asia

Input: 125.208.162.4

canonical name: 125.208.162.4.cbn.net.id

Registered Domain: cbn.net.id

TraceRoute from Network-Tools.com to 125.208.162.4
[125.208.162.4.cbn.net.id]

Hop	(ms)	(ms)	(ms)	IP Address	Host name
1	1	0	3	206.123.64.233	-
2	Timed out	Timed out	Timed out	Timed out	-
3	Timed out	Timed out	Timed out	Timed out	-
4	22	22	22	62.115.52.221	dls-b21-link.telia.net
5	54	54	54	62.115.122.27	las-b21-link.telia.net.122.115.62.in-addr.arpa
6	221	221	223	62.115.116.40	sjb-b21-link.telia.net
7	222	222	222	62.115.114.41	sng-b1-link.telia.net
8	Timed out	Timed out	Timed out	Timed out	-
9	223	223	224	121.100.5.234	-
10	233	250	233	121.100.4.82	-
11	241	231	240	202.158.127.131	ip127-131.cbn.net.id
12	232	227	227	125.208.162.149	125.208.162.149.cbn.net.id
13	224	224	224	125.208.162.4	125.208.162.4.cbn.net.id

Trace complete

**15. Pada IP 210.210.179.104 dapat dilihat siapa yang mengakses
berniaga.com**

210.210.179.104 is from Indonesia (ID) in region Southern and Eastern Asia

Input: 210.210.179.104

canonical name: 210.210.179.104.cbn.net.id

Registered Domain: cbn.net.id

TraceRoute from Network-Tools.com to 210.210.179.104
[210.210.179.104.cbn.net.id]

Hop	(ms)	(ms)	(ms)	IP Address	Host name
1	1	0	0	206.123.64.221	-
2	Timed out	Timed out	Timed out	Timed out	-
3	0	0	1	4.69.208.229	ae-3- 5.edge5.dallas3.level3.net
4	1	1	1	206.82.142.45	ix-ae-19-0.tcore2.dt8- dallas.as6453.net
5	221	221	221	66.110.57.21	-
6	220	223	220	66.110.59.2	if-ae-2-2.tcore2.lvw- los-angeles.as6453.net
7	210	210	210	66.110.59.62	if-ae-12-2.tcore2.tv2- tokyo.as6453.net
8	208	208	208	180.87.12.109	if-ae-6-2.tcore1.svw- singapore.as6453.net
9	209	209	209	180.87.98.37	if-ae-11-2.thar1.svq- singapore.as6453.net
10	213	213	213	216.6.93.26	-
11	222	222	230	121.100.5.238	-
12	229	229	229	121.100.4.90	-


```

13      229  242  229      125.208.162.177
125.208.162.177.cbn.net.id

14      227  227  228      125.208.162.4
125.208.162.4.cbn.net.id

15      224  225  224      210.210.179.104
210.210.179.104.cbn.net.id

```

Trace complete

```

Tracing route to microsoft.com [104.40.211.35]
over a maximum of 30 hops:

  0  1      2 ms      3 ms      2 ms      192.168.43.1
  1  *      *          *          Request timed out.
  2  *      *          *          Request timed out.
  3  *      *          *          Request timed out.
  4  *      *          *          Request timed out.
  5  78 ms   58 ms     69 ms     118.98.84.117
  6  77 ms   76 ms    146 ms    180.240.193.158
  7  84 ms   218 ms   87 ms     180.240.193.157
  8  78 ms   243 ms   66 ms     180.240.204.2
  9  79 ms   77 ms    74 ms     180.240.204.2
 10  83 ms   94 ms    126 ms    207.46.41.76
 11 168 ms  256 ms   366 ms    207.46.38.253
 12 156 ms  143 ms   137 ms    204.152.140.180
 13 332 ms  332 ms   328 ms    104.44.224.79
 14 331 ms  344 ms   502 ms    104.44.9.148
 15 396 ms  439 ms   435 ms    104.44.4.232
 16 428 ms  456 ms   333 ms    104.44.9.235
 17 *      *          *          Request timed out.
 18 *      *          *          Request timed out.
 19 *      *          *          Request timed out.
 20 *      *          *          Request timed out.
 21 *      *          2464 ms   104.44.9.241
 22 *      3401 ms   608 ms    204.152.140.110
 23 *      *          *          Request timed out.
 24 *      *          *          Request timed out.
 25 *      *          *          Request timed out.
 26 *      *          *          Request timed out.
 27 *      *          *          Request timed out.
 28 *      *          *          Request timed out.
 29 *      *          *          Request timed out.
 30 *      *          *          Request timed out.

```

```
C:\Users\ACER>tracert berniaga.com

Tracing route to berniaga.com [182.253.226.10]
over a maximum of 30 hops:

  0  1      2 ms      2 ms      4 ms      192.168.43.1
  1  *      *          *          Request timed out.
  2  *      *          *          Request timed out.
  3  *      *          *          Request timed out.
  4  *      *          *          Request timed out.
  5  49 ms  78 ms     50 ms     114.120.194.85
  6  90 ms  76 ms     78 ms     114.120.194.78
  7  201 ms 121 ms    118 ms    118.98.84.209
  8  247 ms 148 ms    128 ms    118.98.51.110
  9  196 ms 213 ms    230 ms    118.98.51.109
 10 538 ms 441 ms    231 ms    103.28.74.158
 11 223 ms 241 ms    179 ms    203.142.67.142
 12 *      *          *          Request timed out.
 13 *      *          *          Request timed out.
 14 *      *          *          Request timed out.
 15 *      *          *          Request timed out.
 16 *      *          *          Request timed out.
 17 *      *          *          Request timed out.
 18 *      *          *          Request timed out.
 19 *      *          *          Request timed out.
 20 *      *          *          Request timed out.
 21 *      *          *          Request timed out.
 22 *      *          *          Request timed out.
 23 *      *          *          Request timed out.
 24 *      *          *          Request timed out.
 25 *      *          *          Request timed out.
 26 *      *          *          Request timed out.
 27 *      *          *          Request timed out.
 28 *      *          *          Request timed out.
 29 *      *          *          Request timed out.
 30 *      *          *          Request timed out.
```

Capture pada command prompt dengan networks-tools perbedaannya terlihat saat melakukan track yaitu pada networks-tools dapat mengetahui alamat, fax, nomor telpon , Host Name , serta nama ID , sedangkan pada command prompt tidak dijelaskan secara detail, contohnya seperti yang saya ambil pada IP **125.208.162.177** yaitu:

Retrieving DNS records for 125.208.162.177.cbn.net.id...

Attempt to get a DNS server for 125.208.162.177.cbn.net.id failed:
125.208.162.177.cbn.net.id does not exist in the DNSWhois query for cbn.net.id...

Results returned from whois.pandi.or.id:

Domain ID:PANDI-DO172459

Domain Name:CBN.NET.ID

Created On:01-Jan-1998 13:29:47 UTC

Last Updated On:20-Aug-2016 14:42:04 UTC

Expiration Date:01-Sep-2018 23:59:59 UTC

Status:ok

Registrant ID:cbn1

Registrant Name:CBN Hostmaster

Registrant Organization:PT Cyberindo Aditama

Registrant Street1:Cyber 2 Tower, 33rd floor

Registrant Street2:Jl HR Rasuna Said Blok X5 No. 13

Registrant Street3:Jakarta Selatan

Registrant City:Jakarta

Registrant State/Province:DKI Jakarta

Registrant Postal Code:12950

Registrant Country:ID

Registrant Phone:+62.2129964900

Registrant FAX:+62.215742481

Registrant Email:dns-admin@cbn.net.id

Admin ID:cbn1

Admin Name:CBN Hostmaster

Admin Organization:PT Cyberindo Aditama

Admin Street1:Cyber 2 Tower, 33rd floor

Admin Street2:Jl HR Rasuna Said Blok X5 No. 13

Admin Street3:Jakarta Selatan

Admin City:Jakarta

Admin State/Province:DKI Jakarta

Admin Postal Code:12950

Admin Country:ID

Admin Phone:+62.2129964900

Admin FAX:+62.215742481

Admin Email:dns-admin@cbn.net.id

Tech ID:cbn1

Tech Name:CBN Hostmaster

Tech Organization:PT Cyberindo Aditama

Tech Street1:Cyber 2 Tower, 33rd floor

Tech Street2:Jl HR Rasuna Said Blok X5 No. 13

Tech Street3:Jakarta Selatan

Tech City:Jakarta

Tech State/Province:DKI Jakarta

Tech Postal Code:12950

Tech Country:ID

Tech Phone:+62.2129964900

Tech FAX:+62.215742481

Tech Email:dns-admin@cbn.net.id

Billing ID:cbn2

Billing Name:CBN Billing Billing

Billing Organization:PT Cyberindo Aditama

Billing Street1:Manggala Wanabakti IV 6th Floor

Jl Gatot Subroto

Billing Street2:Manggala Wanabakti IV 6th Floor

Jl Gatot Subroto

Billing City:Jakarta

Billing State/Province:DKI Jakarta

Billing Postal Code:10270

Billing Country:ID

Billing Phone:+62.622157994500

Billing FAX:+62.62215742481

Billing Email:dns-billing@cbn.net.id

Sponsoring Registrar ID:pandi

Sponsoring Registrar IANA ID:1

Sponsoring Registrar Organization:PANDI

Sponsoring Registrar Postal Code:

Sponsoring Registrar Country:ID

Sponsoring Registrar Phone:+62 21 57939151

Name Server:NS1.INDOSAT.NET.ID

Name Server:NS1.CBN.NET.ID

Name Server:NS2.CBN.NET.ID

Name Server:NS2.INDO.NET.ID

Name Server:DNS2.NAP.NET.ID

DNSSEC:Unsigne

Network IP address lookup:

Whois query for 125.208.162.177...

Results returned from whois.arin.net:

#

ARIN WHOIS data and services are subject to the Terms of Use

available at: https://www.arin.net/whois_tou.html

#

If you see inaccuracies in the results, please report at

<https://www.arin.net/public/whoisinaccuracy/index.xhtml>

#

#

The following results may also be obtained via:

#

<https://whois.arin.net/rest/nets;q=125.208.162.177?showDetails=true&showARIN=false&showNonArinTopLevelNet=false&ext=netref2>

#

NetRange: 125.0.0.0 - 125.255.255.255

CIDR: 125.0.0.0/8

NetName: APNIC-125

NetHandle: NET-125-0-0-0-1

Parent: ()

NetType: Allocated to APNIC

OriginAS:

Organization: Asia Pacific Network Information Centre (APNIC)

RegDate: 2005-01-27

Updated: 2010-07-30

Comment: This IP address range is not registered in the ARIN database.

Comment: For details, refer to the APNIC Whois Database via

Comment: WHOIS.APNIC.NET or <http://wq.apnic.net/apnic-bin/whois.pl>

Comment: **** IMPORTANT NOTE: APNIC is the Regional Internet Registry**

Comment: for the Asia Pacific region. APNIC does not operate networks

Comment: using this IP address range and is not able to investigate

Comment: spam or abuse reports relating to these addresses. For more

Comment: help, refer to http://www.apnic.net/apnic-info/whois_search2/abuse-and-spamming

Ref: <https://whois.arin.net/rest/net/NET-125-0-0-0-1>

ResourceLink: <http://wq.apnic.net/whois-search/static/search.html>

ResourceLink: whois.apnic.net

OrgName: Asia Pacific Network Information Centre

OrgId: APNIC

Address: PO Box 3646

City: South Brisbane

StateProv: QLD

PostalCode: 4101

Country: AU

RegDate:

Updated: 2012-01-24

Ref: <https://whois.arin.net/rest/org/APNIC>

ReferralServer: [whois://whois.apnic.net](http://whois.apnic.net)

ResourceLink: <http://wq.apnic.net/whois-search/static/search.html>

OrgAbuseHandle: AWC12-ARIN

OrgAbuseName: APNIC Whois Contact

OrgAbusePhone: +61 7 3858 3188

OrgAbuseEmail: search-apnic-not-arin@apnic.net

OrgAbuseRef: <https://whois.arin.net/rest/poc/AWC12-ARIN>

OrgTechHandle: AWC12-ARIN

OrgTechName: APNIC Whois Contact

OrgTechPhone: +61 7 3858 3188

OrgTechEmail: search-apnic-not-arin@apnic.net

OrgTechRef: <https://whois.arin.net/rest/poc/AWC12-ARIN>

ARIN WHOIS data and services are subject to the Terms of Use
available at: https://www.arin.net/whois_tou.html

If you see inaccuracies in the results, please report at
<https://www.arin.net/public/whoisinaccuracy/index.xhtml>
#

Results returned from whois.apnic.net:

% [whois.apnic.net]

% Whois data copyright terms <http://www.apnic.net/db/dbcopyright.html>

% Information related to '125.208.162.0 - 125.208.162.255'

inetnum: 125.208.162.0 - 125.208.162.255
netname: CBN-JKTADMIN-NETBLOCK
country: ID
descr: PT Cyberindo Aditama
descr: Jakarta 12950
admin-c: CH57-AP
tech-c: CH57-AP
status: ASSIGNED NON-PORTABLE
changed: hostmaster@cbn.net.id 20110127
mnt-by: NOC-MAINT-CBN-APNIC
mnt-irt: IRT-CBN-ID
source: APNIC

irt: IRT-CBN-ID
address: PT Cyberindo Aditama
address: Cyber 2 Tower - 33rd Floor
address: Jl. HR Rasuna Said Blok X5 No. 13
address: Jakarta 12950
e-mail: noc@cbn.net.id
abuse-mailbox: abuse@cbn.net.id
admin-c: CH57-AP
tech-c: CH57-AP
auth: # Filtered
mnt-by: MNT-APJII-ID
changed: hostmaster@idnic.net 20110114
source: APNIC

person: CBNnet Hostmaster
nic-hdl: CH57-AP
e-mail: hostmaster@cbn.net.id
address: PT. Cyberindo Aditama
address: Cyber 2 Tower 33rd Floor
address: Jl. HR. Rasuna Said X5 No.13
address: Jakarta 12950 - Indonesia
phone: +62-21-2996-4900
fax-no: +62-21-574-2481
country: ID
changed: hostmaster@cbn.net.id 20060518
changed: hostmaster@idnic.net 20150624
mnt-by: NOC-MAINT-CBN-APNIC

source: APNIC

% Information related to '125.208.162.0/24AS4787'

route: 125.208.162.0/24

descr: Route Object for CBN

descr: PT Cyberindo Aditama

descr: Cyber 2 Tower, 33rd Floor

descr: Jl. HR. Rasuna Said Blok X5 No. 13

descr: Jakarta 12950

origin: AS4787

country: ID

mnt-by: NOC-MAINT-CBN-APNIC

changed: hostmaster@idnic.net 20140904

source: APNIC