

Nama : Gonewaje  
NIM : 09011181419005  
Kelas : SK5A

# **TUGAS JARINGAN KOMPUTER**

## **TASK IV**



Disusun Oleh  
Nama : Gonewaje  
NIM : 09011181419005  
Kelas : SK5A  
Dosen Pembimbing : Dr. Deris Stiawan, M.T

**JURUSAN SISTEM KOMPUTER**  
**FAKULTAS ILMU KOMPUTER**  
**UNIVERSITAS SRIWIJAYA**

Nama : Gonewaje  
 NIM : 09011181419005  
 Kelas : SK5A

## TASK IV Computer Networking

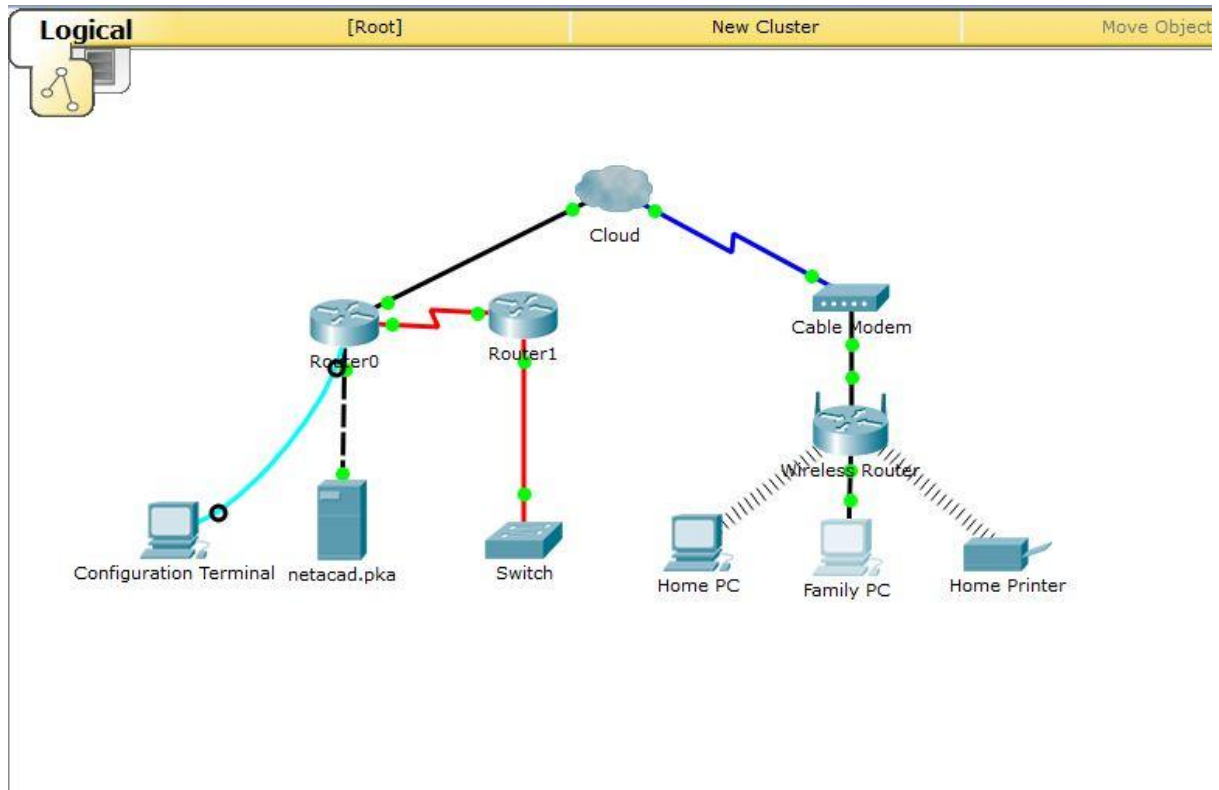
### 1. Identifying Network Devices and Cabling

| ID | Manufacturer | Model       | Type        | Functionality                | Physical Characteristics  |
|----|--------------|-------------|-------------|------------------------------|---|
| 1  | Cisco        | 1941        | Router      | Router                       | 2 GigabitEthernet Ports<br>2 EHWIC slots<br>2 CompactFlash slots<br>1 ISM slot<br>2 Console ports: USB, RJ-45 |
| 2  | Cisco        | Sf302-08pp  | Switch      | Switch                       | 8x 10/100 rj45<br>2x combo gigabit puerto consola   |
| 3  | Huawey       | G532e       | Modem       | Router<br>Switch acces point | 4 slots fast ethernet<br>1 pueto ADSL<br>1 access point   |
| 4  | Tp-link      | T3700g-28tq | Switch      | Switch                       | 24/10/100/1000 mbps rj45<br>1 console port<br>Auto negociasion  |
| 5  | Tp-link      | Tl-mr3420   | Router      | Router                       | USB wireless router<br>1 WAN port<br>4 LAN ports<br>autonegorotation  |
| 6  | Tp-link      | Ti-wa701nd  | Acces point | Acces point                  | 150 mbps speed<br>Puerto console  |

**Nama : Gonewaje**  
**NIM : 09011181419005**  
**Kelas : SK5A**

| ID | Network Media | Type     | Description and to What It Connects  |
|----|---------------|----------|--|
| 1  | UTP           | Copper   | Connect wired NIC and Ethernet ports on network devices<br>Cat 5 straight-through wired. Connects PCs and routers to switches and wiring panels. |
| 2  | Cohaxial      | copper   | coaxial ports for connecting network devices connected satellite antennas security cameras etc.  |
| 3  | Acces point   | cordless | nic ports connects wireless radio signals, Swiche connects to PCs or router to pc or comunicasion between pcs                                    |
| 4  | Fibra optical | Fibra    | 6. direct cable cat connected PC and router switches aneles wiring.<br>router to router connects local networks                                  |
| 5  | ftp           | copper   | NIC connects and ethemetports for network devices. Cat 6 shilded pc and router connects with switch  |
| 6  | utp           | copper   | Connect NIC and ethemet port cable on network device. Cat 6 connects PC and switch to cable  |

Nama : Gonewaje  
NIM : 09011181419005  
Kelas : SK5A  
2.Topologi Konfigurasi dari file PKA

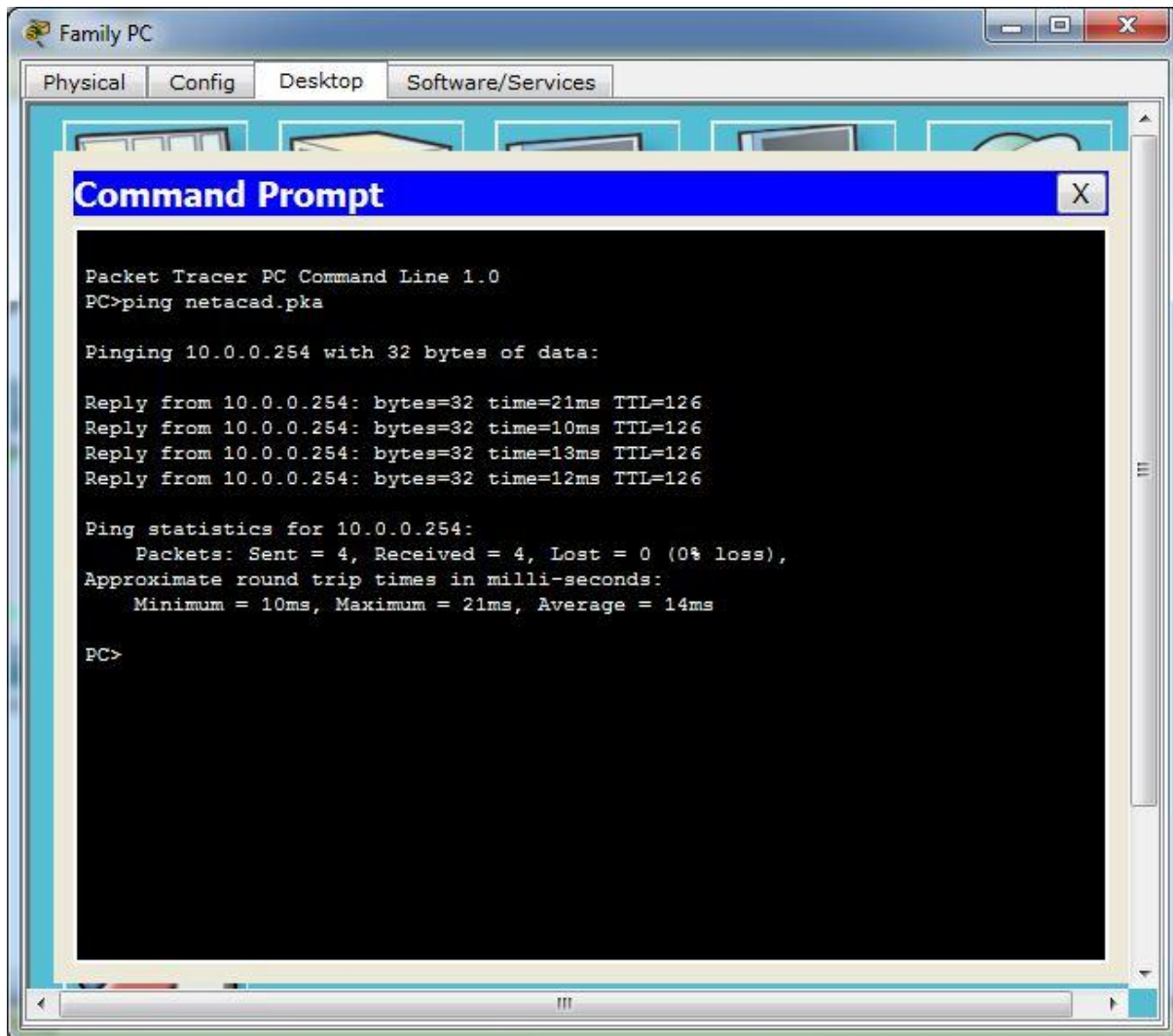


#### Part 4: Verify Connections

Nama : Gonewaje  
NIM : 09011181419005  
Kelas : SK5A

**Step 1: Test the connection from Family PC to netacad.pka.**

- a. Open the **Family PC** command prompt and ping **netacad.pka**.



The screenshot shows a Packet Tracer Family PC window with a Command Prompt open. The Command Prompt displays the following text:

```
Packet Tracer PC Command Line 1.0
PC>ping netacad.pka

Pinging 10.0.0.254 with 32 bytes of data:

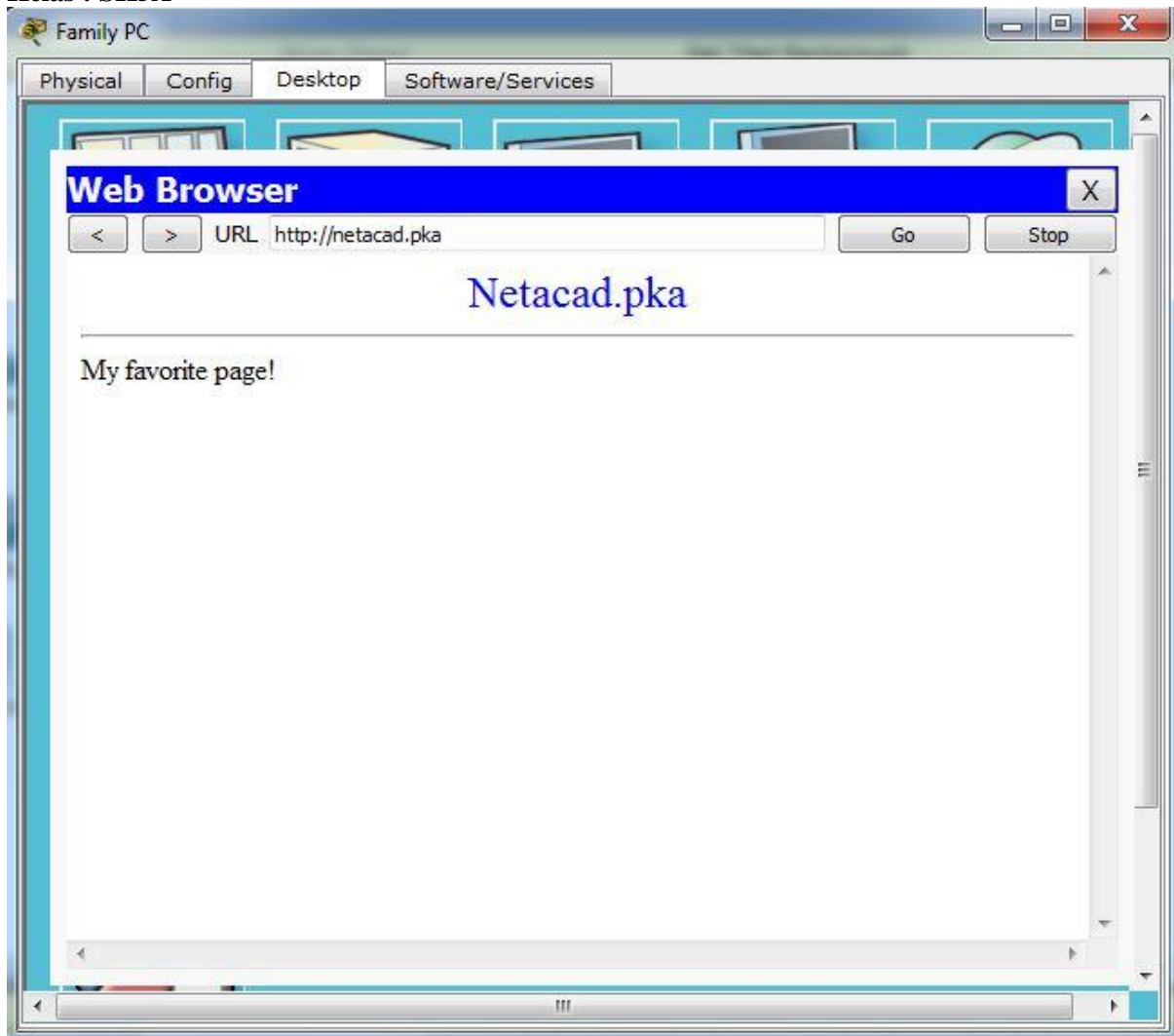
Reply from 10.0.0.254: bytes=32 time=21ms TTL=126
Reply from 10.0.0.254: bytes=32 time=10ms TTL=126
Reply from 10.0.0.254: bytes=32 time=13ms TTL=126
Reply from 10.0.0.254: bytes=32 time=12ms TTL=126

Ping statistics for 10.0.0.254:
    Packets: Sent = 4, Received = 4, Lost = 0 (0% loss),
    Approximate round trip times in milli-seconds:
        Minimum = 10ms, Maximum = 21ms, Average = 14ms

PC>
```

- b. Open the **Web Browser** and the web address **http://netacad.pka**.

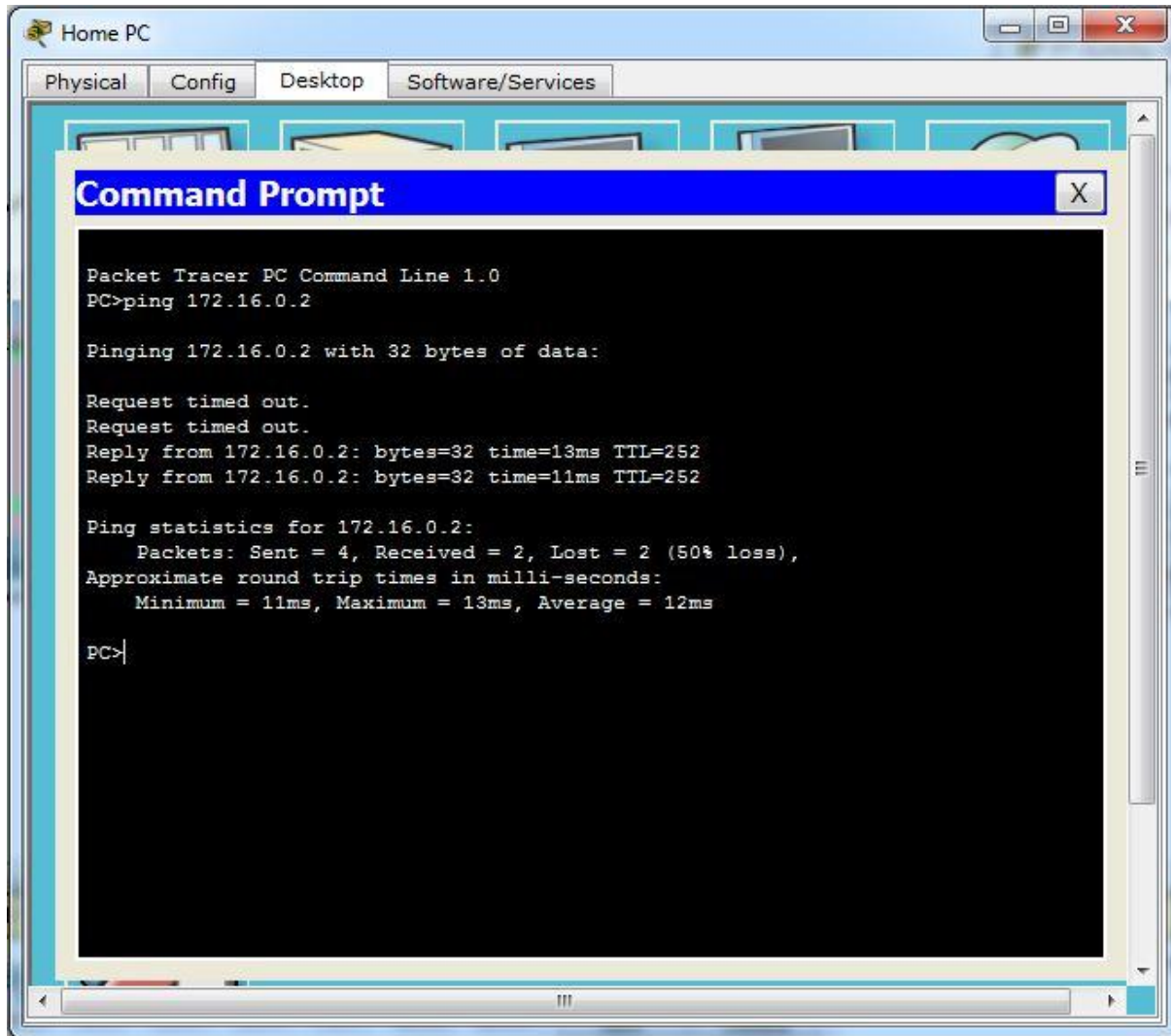
Nama : Gonewaje  
NIM : 0901181419005  
Kelas : SK5A



**Step 2: Ping the Switch from Home PC.**

Open the **Home PC** command prompt and ping the **Switch** IP address of to verify the connection.

Nama : Gonewaje  
NIM : 09011181419005  
Kelas : SK5A



```
Packet Tracer PC Command Line 1.0
PC>ping 172.16.0.2

Pinging 172.16.0.2 with 32 bytes of data:

Request timed out.
Request timed out.
Reply from 172.16.0.2: bytes=32 time=13ms TTL=252
Reply from 172.16.0.2: bytes=32 time=11ms TTL=252

Ping statistics for 172.16.0.2:
    Packets: Sent = 4, Received = 2, Lost = 2 (50% loss),
    Approximate round trip times in milli-seconds:
        Minimum = 11ms, Maximum = 13ms, Average = 12ms

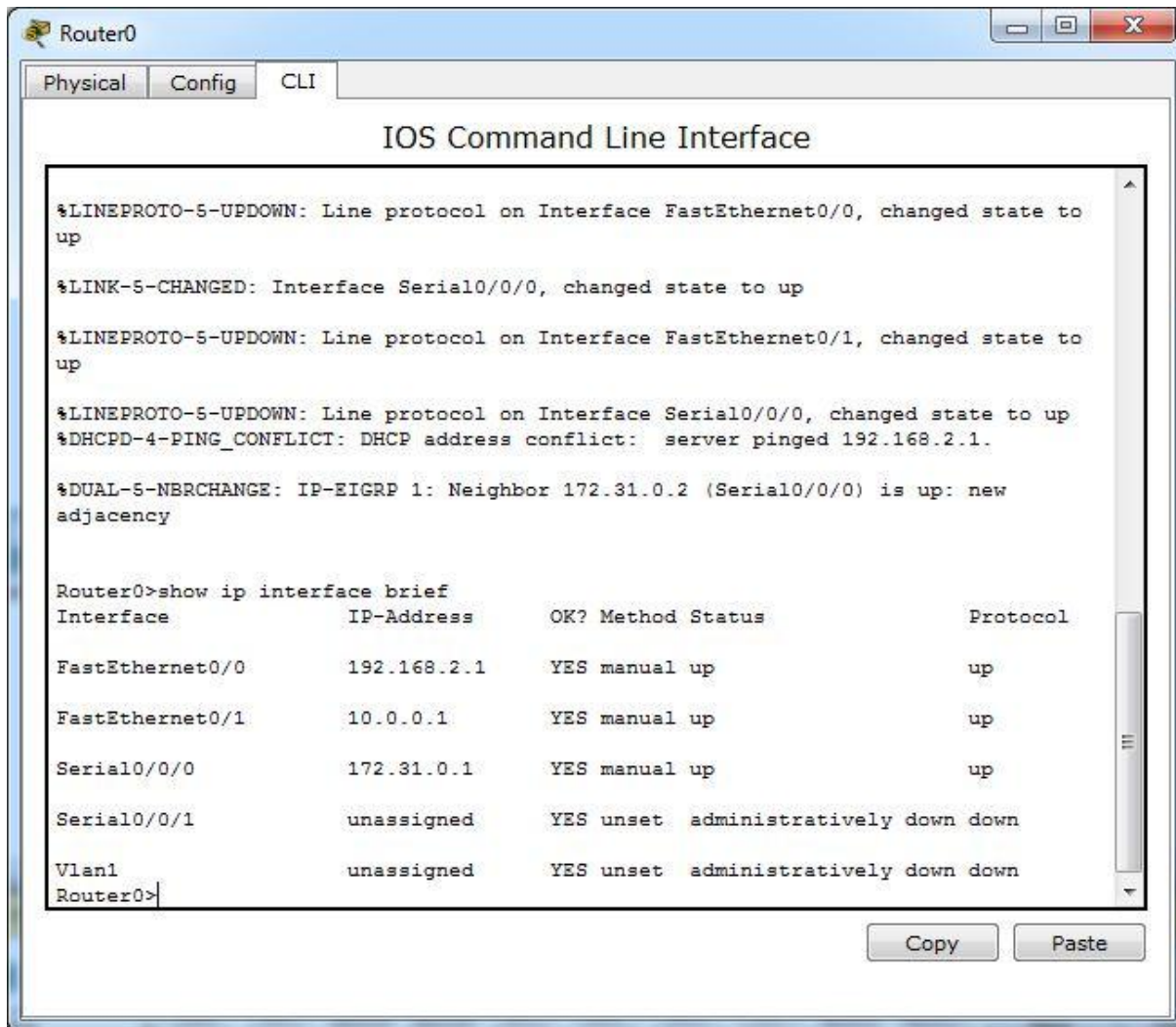
PC>
```

**Step 3: Open Router0 from Configuration Terminal.**

- a. Open the **Terminal of Configuration Terminal** and accept the default settings.

Nama : Gonewaje  
NIM : 0901181419005  
Kelas : SK5A

- b. Press **Enter** to view the **Router0** command prompt.
- c. Type **show ip interface brief** to view interface statuses.





Nama : Gonewaje  
NIM : 09011181419005  
Kelas : SK5A

## Part 5: Examine the Physical Topology

### Step 1: Examine the Cloud.

- Click the **Physical Workspace** tab or press **Shift+P** and **Shift+L** to toggle between the logical and physical workspaces.
- Click the **Home City** icon.
- Click the **Cloud** icon. How many wires are connected to the switch in the blue rack?
- Click **Back** to return to **Home City**.

**ANSWER :**

**2 wires connected to the switch in the blue rack**

### Step 2: Examine the Primary Network.

- Click the **Primary Network** icon. Hold the mouse pointer over the various cables. What is located on the table to the right of the blue rack?
- Click **Back** to return to **Home City**.

**ANSWER :**

**Configuration Terminal**

### Step 3: Examine the Secondary Network.

- Click the **Secondary Network** icon. Hold the mouse pointer over the various cables. Why are there two orange cables connected to each device?
- Click **Back** to return to **Home City**.

**ANSWER :**

Berpasangan, satu untuk mengirim dan satu untuk menerima

### Step 4: Examine the Home Network.

- Why is there an oval mesh covering the home network?
- Click the **Home Network** icon. Why is there no rack to hold the equipment?
- Click the **Logical Workspace** tab to return to the logical topology.

**ANSWER :**

**Karena jaringan rumah biasanya tidak memiliki rak atau workspace yang luas**