

**TUGAS**  
**KEAMANAN JARINGAN**  
**“PASSWORD CRACKING”**



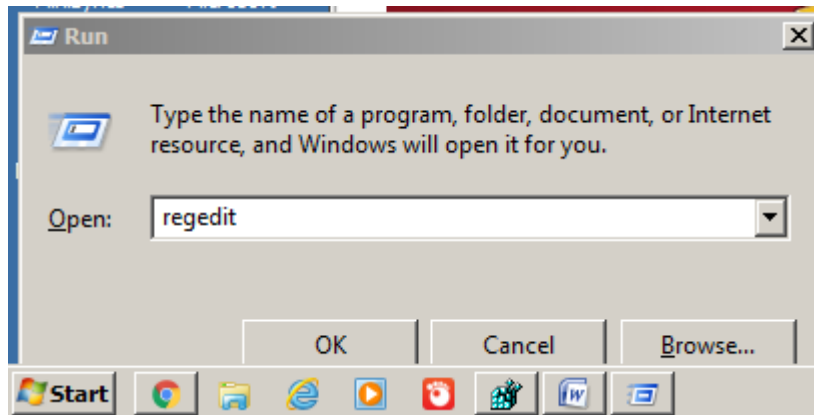
**DISUSUN OLEH:**  
**ERDA JULIAN LESI**  
**09011181419065**

**JURUSAN SISTEM KOMPUTER**  
**FAKULTAS ILMU KOMPUTER**  
**UNIVERSITAS SRIWIJAYA**

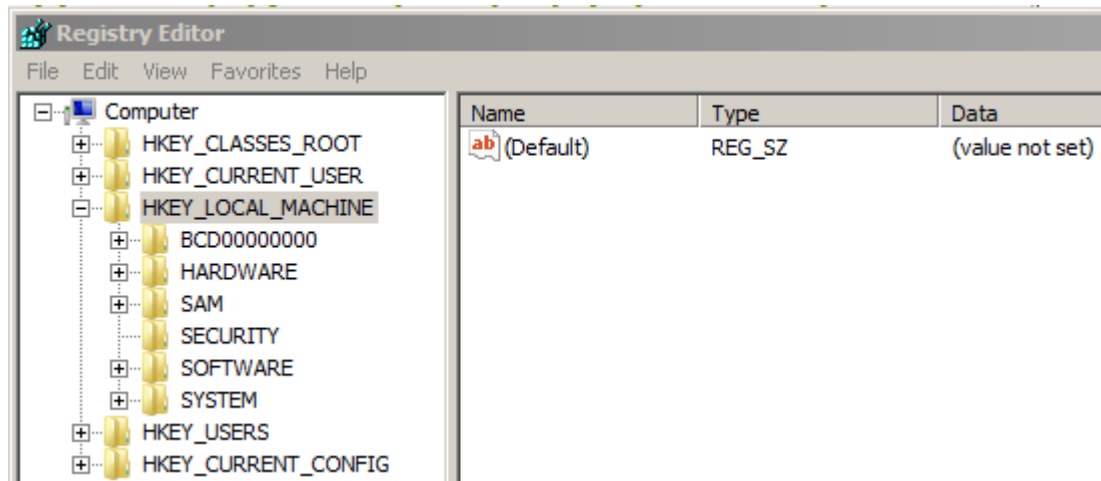
**2017**

## HACK PASSWORD OS, COMPUTER ON DENGAN CAIN AND ABLE

1. Tekan window+r.

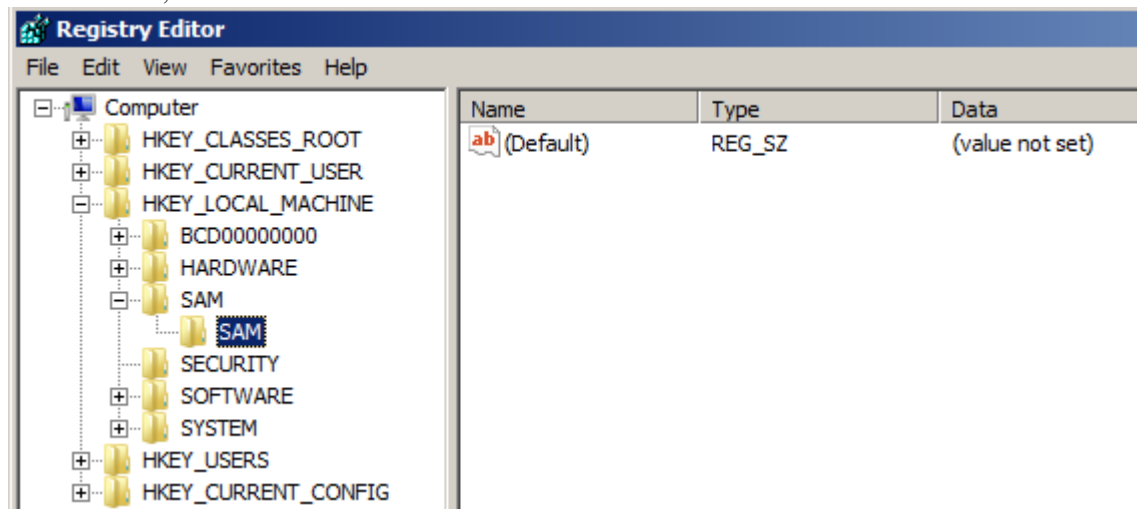


2. Ketik regedit.



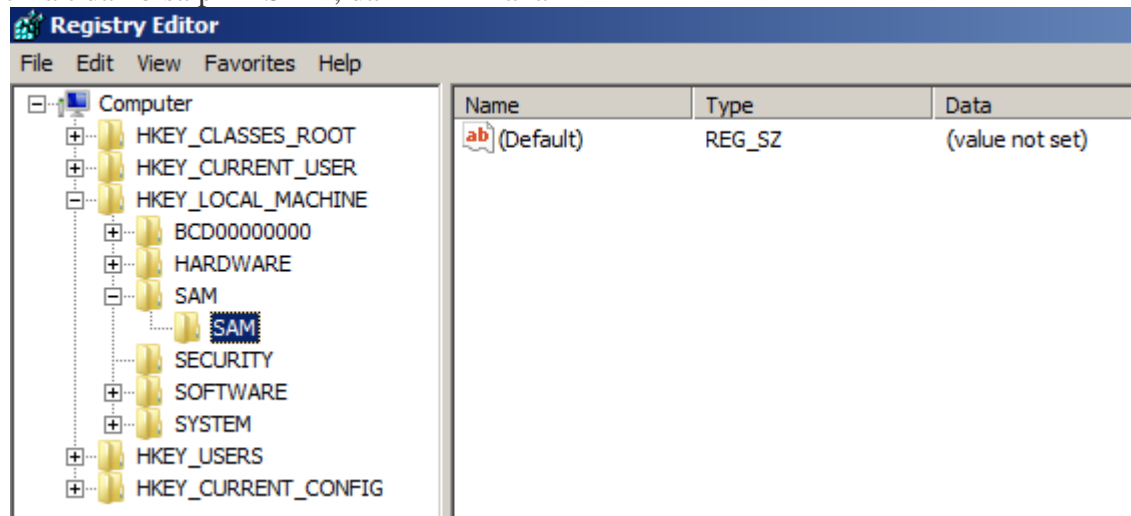
3. Kemudian pilih HKEY\_LOCAL\_MACHINE.

4. Kemudian, klik on sam.

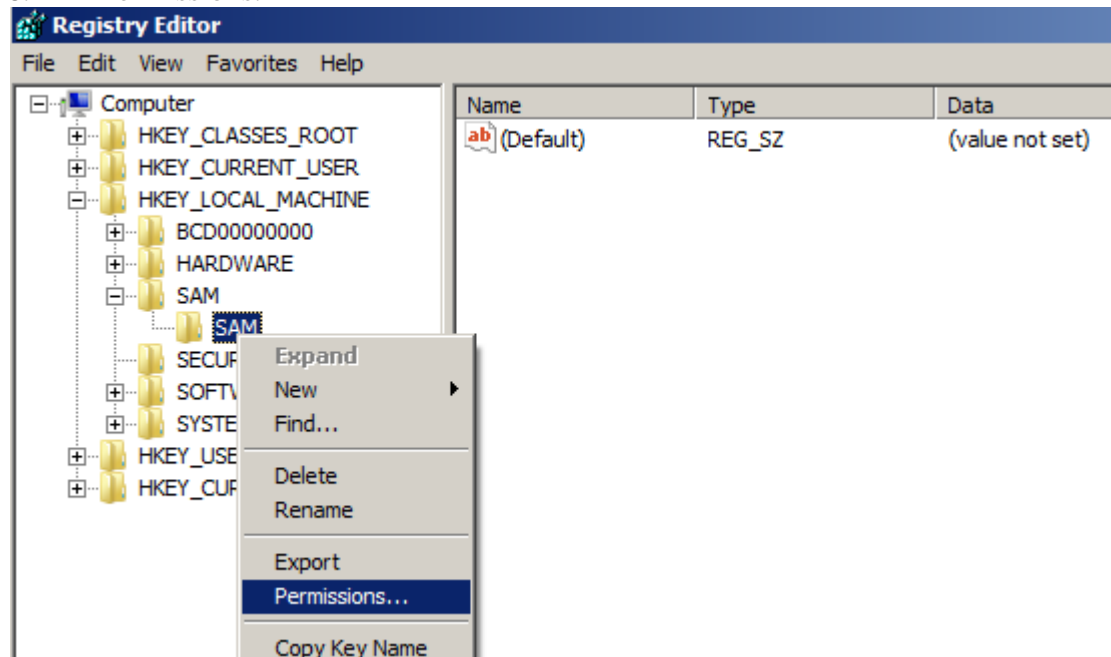


5. Klik kanan dan klik "Export"

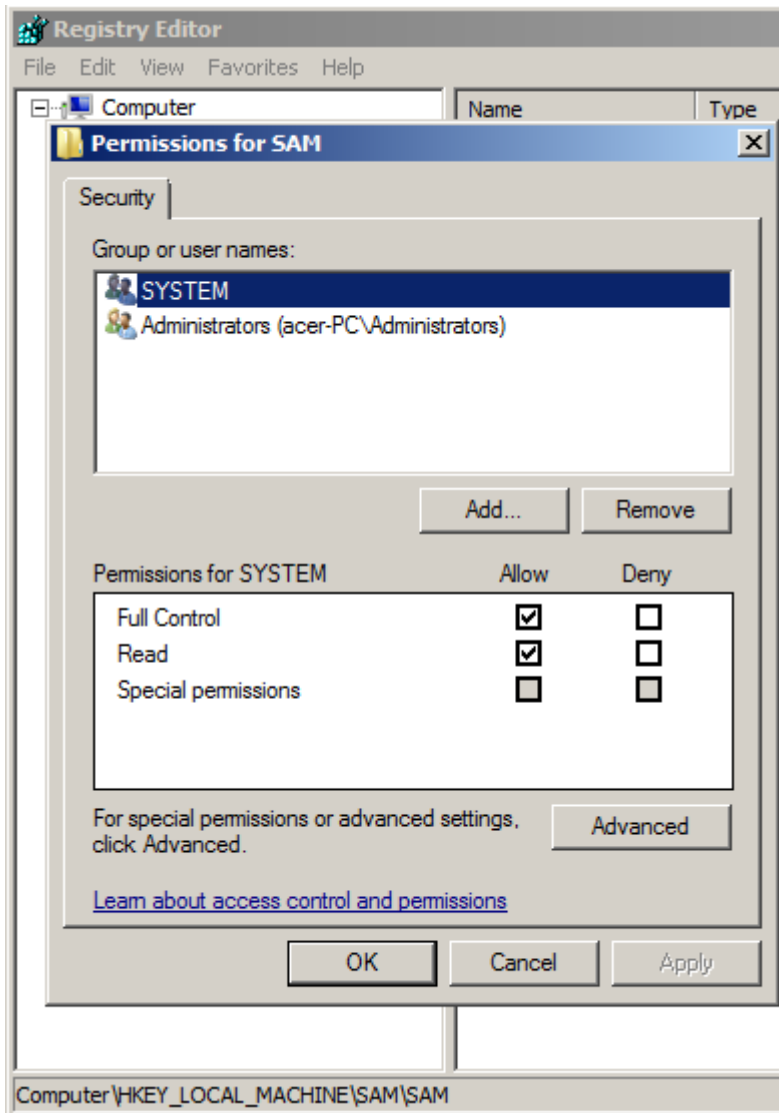
Jika tidak bisa pilih SAM, dan KLIK kanan

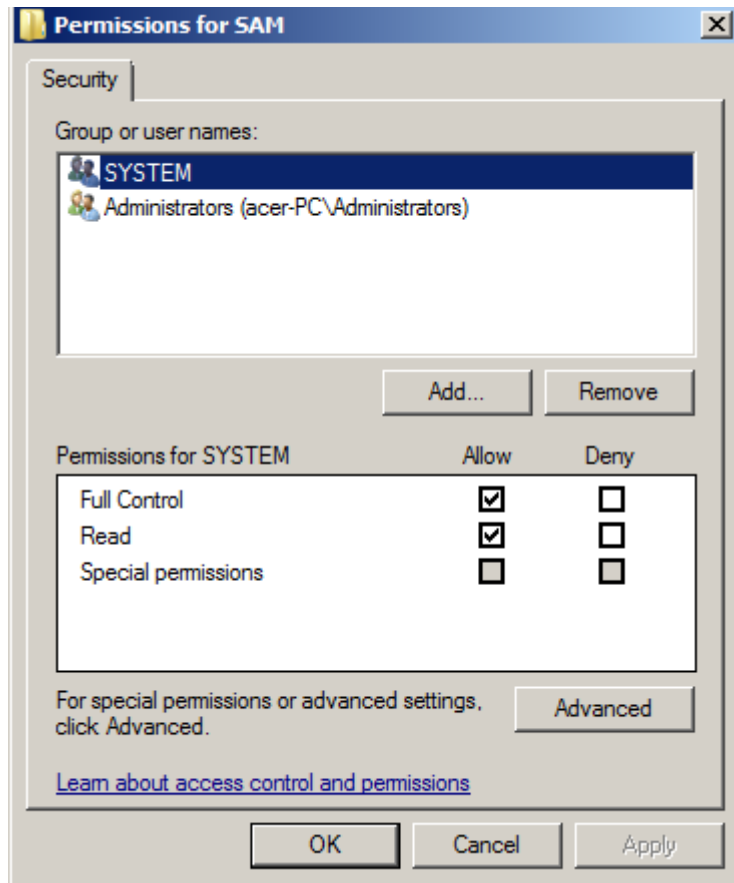


6. Pilih Permissions.



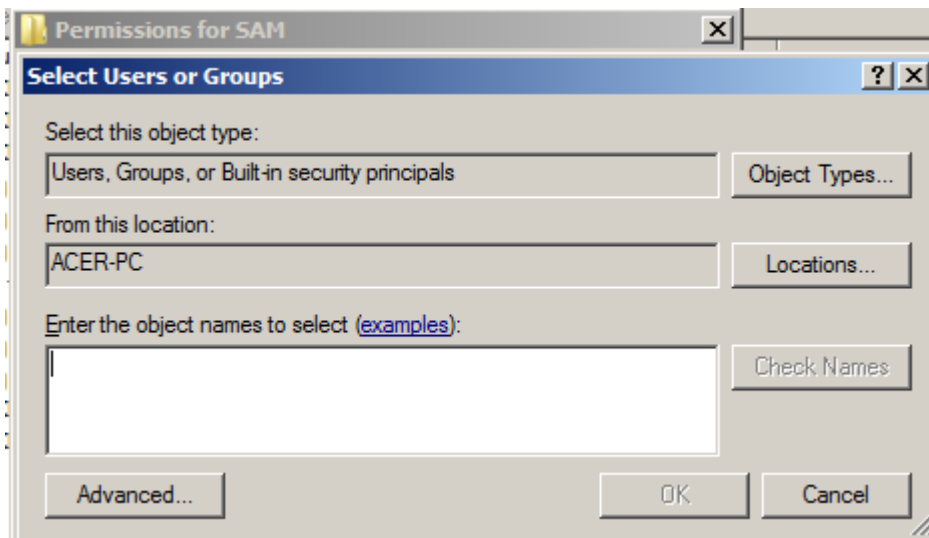
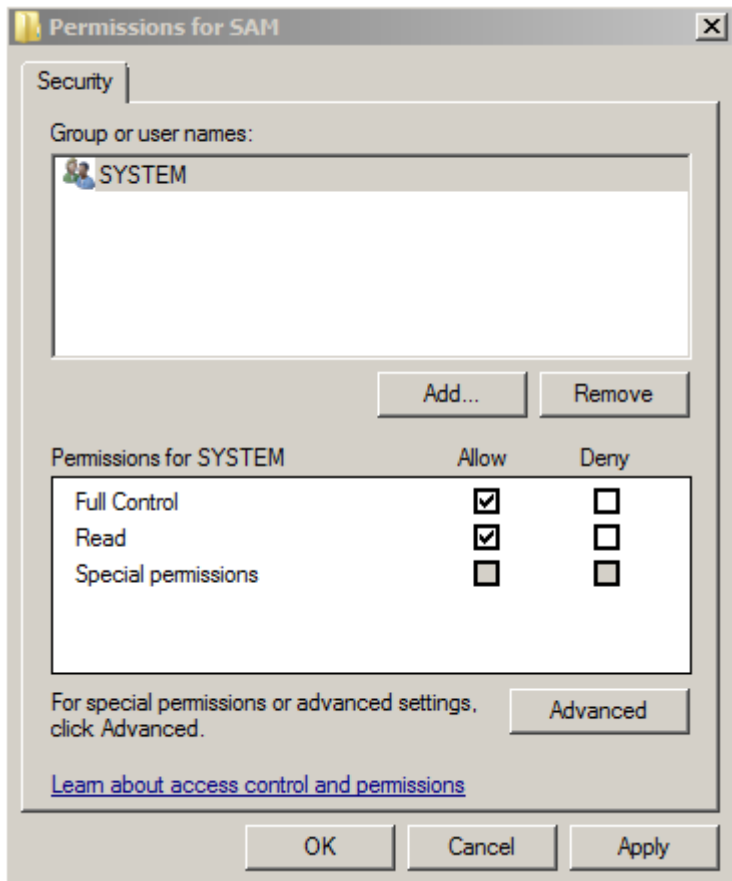
7. Pilih "Administrator"



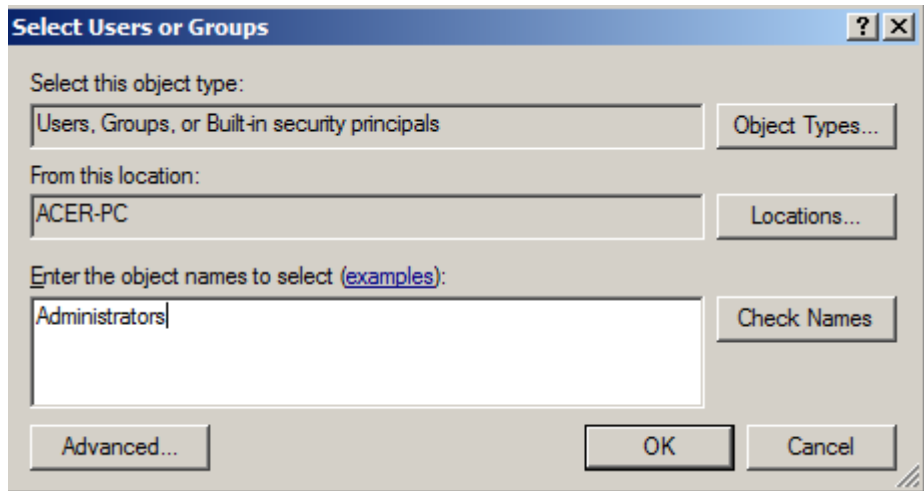


8. Kemudian Administrators dan remove it.

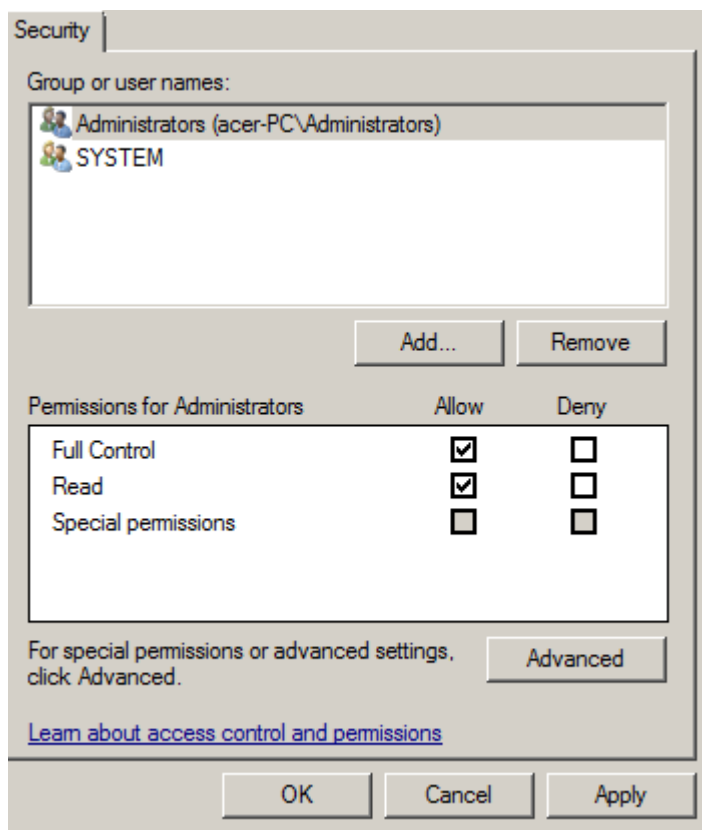
9. Pilih Add



10.ketik "Administrators" dan klik ok.

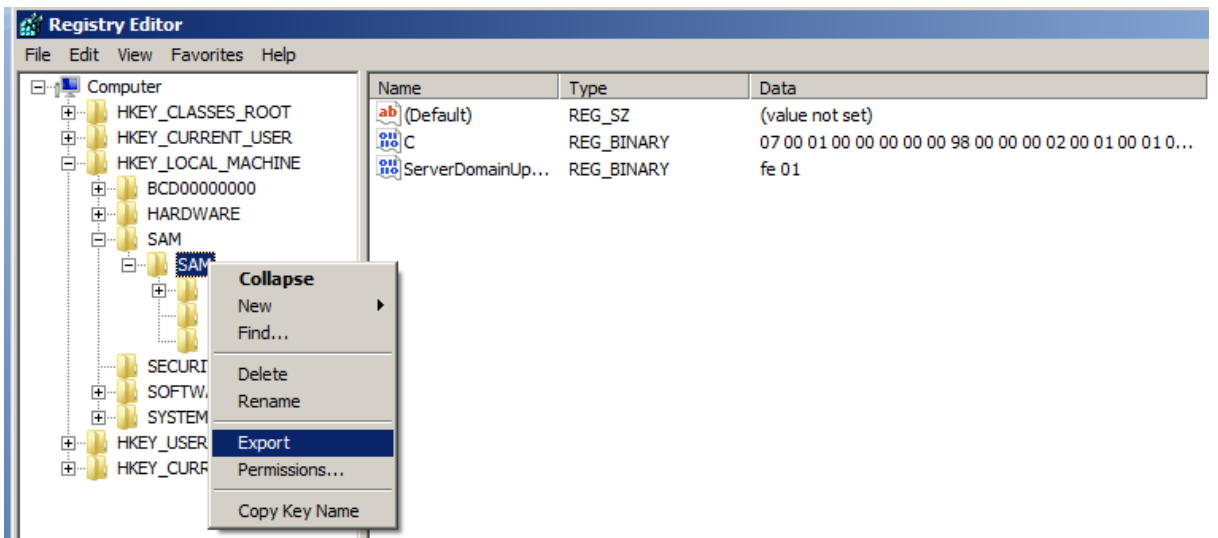
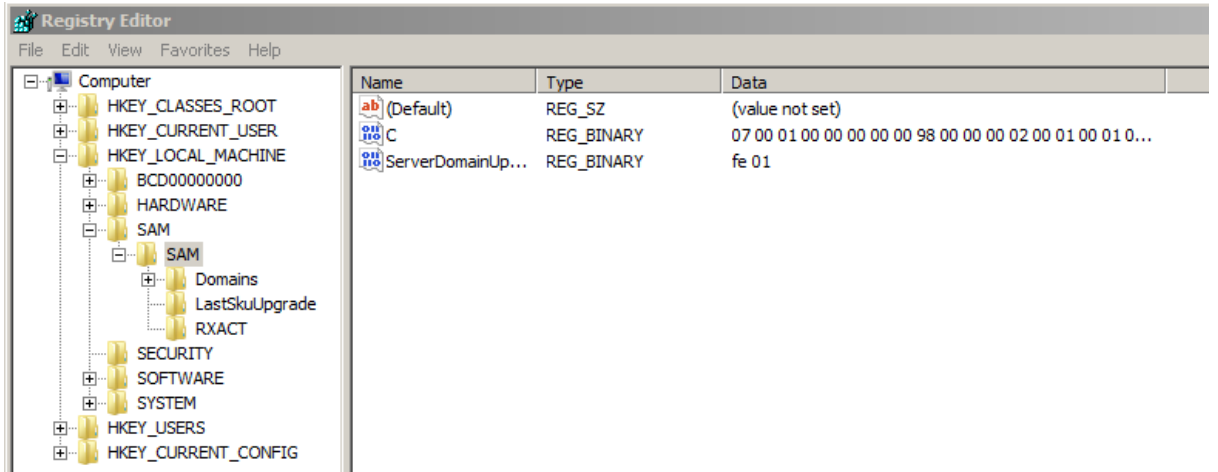


11. Pilih Full Control dan Read. Klik apply

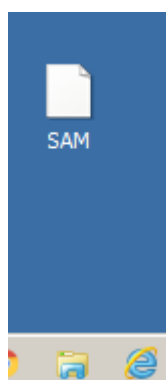
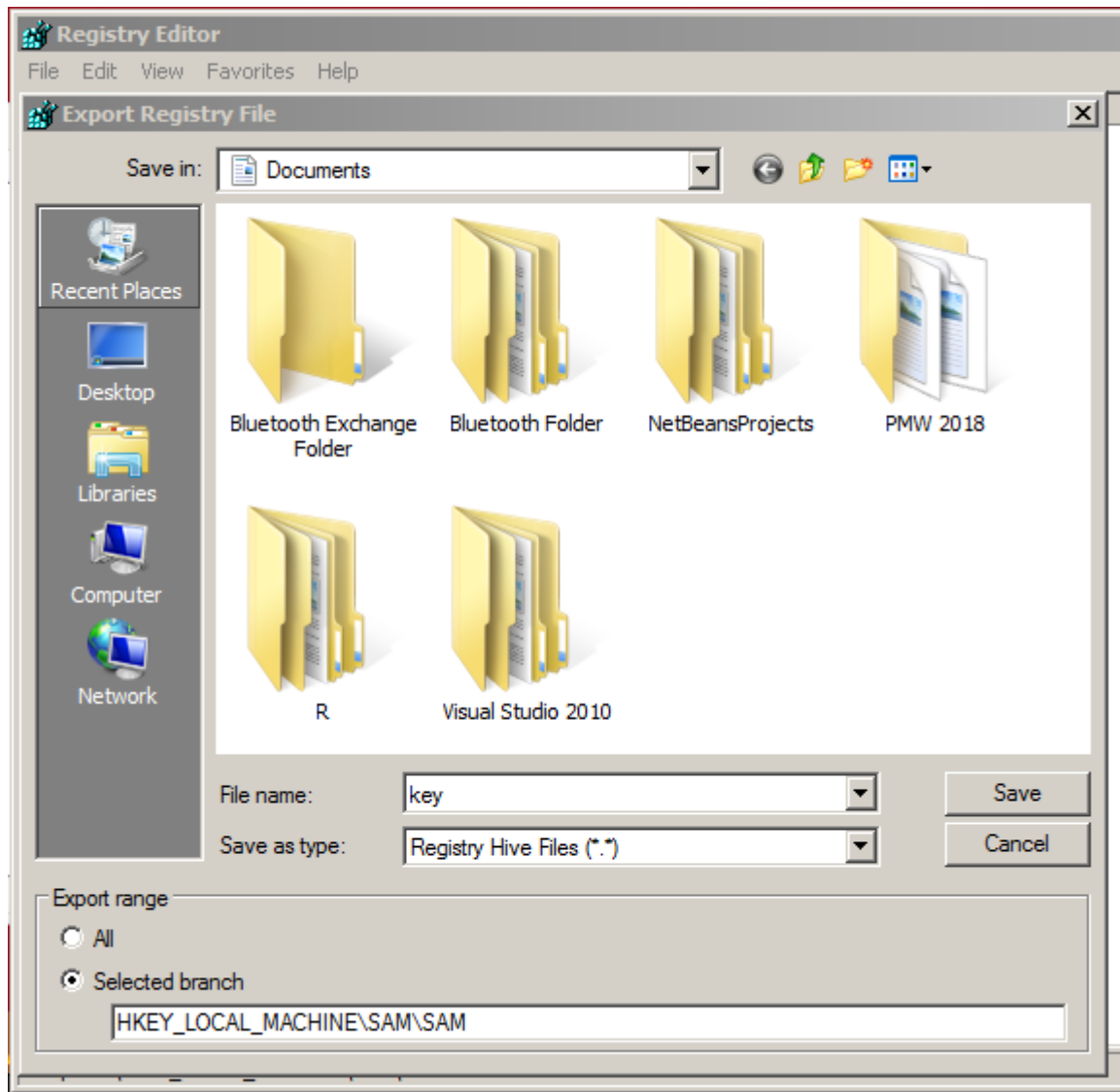


12. Pada SAM Klik export.

12.Export by save as type registry hive files.





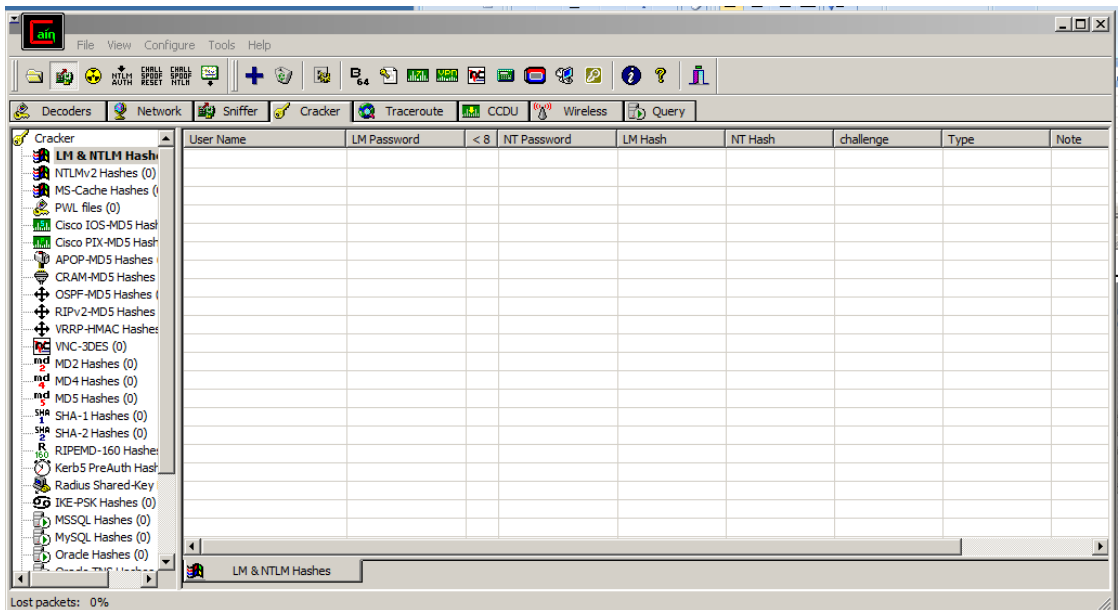


Langkah selanjutnya:

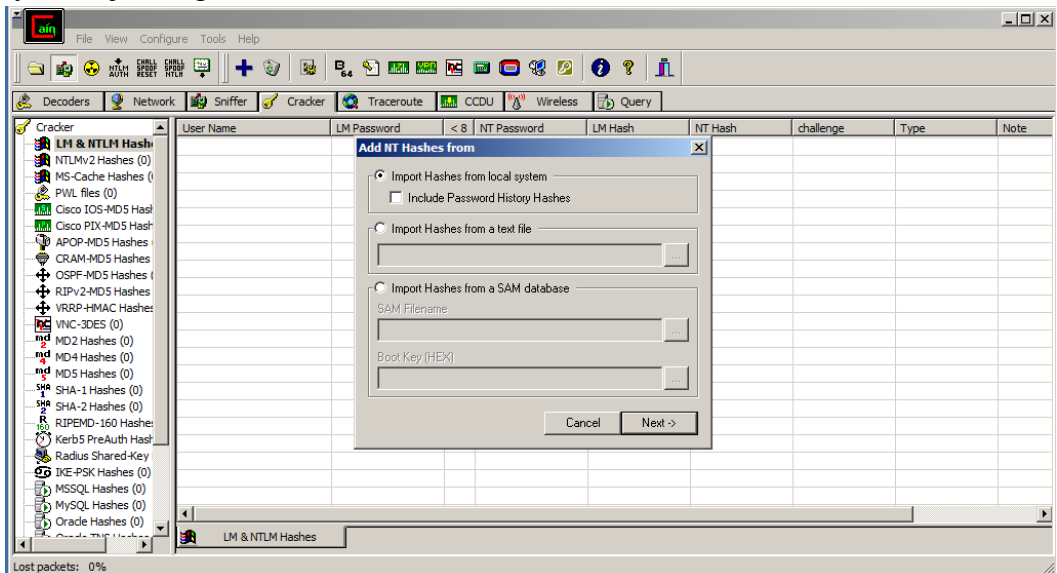
1. Install Cain and Able



Kemudian jalankan.



2. Pilih TAB CRAKER, Klik tanda “+” pilih “Import Hashes from local system” jika ingin otomatis. Pilih next



3. Maka akan terbaca sebagai berikut.

User Name	LM Password	< 8	NT Password	LM Hash	NT Hash	challenge	Type	Note
✘ acer	* empty *	*		AAD3B435B514...	3CA38999E738...		LM & NTLM	
👤 Administrator	* empty *	*	* empty *	AAD3B435B514...	31D6CFE0D16A...		LM & NTLM	
👤 Guest	* empty *	*	* empty *	AAD3B435B514...	31D6CFE0D16A...		LM & NTLM	

4. Kemudian klik nama user yang akan kita hack passwordnya. Klik kanan “Brute-Force Attack, NTLM Hashes

User Name	LM Password	< 8	NT Password	LM Hash	NT Hash	challenge	Type	Note
✘ acer		*		AAD3B435B514...	3CA38999E738...		LM & NTLM	
👤 Admini				35B514...	31D6CFE0D16A...		LM & NTLM	
👤 Guest				35B514...	31D6CFE0D16A...		LM & NTLM	

5. Pada password leght pilih nilai min dan max, karena ini otomatis, maka biasanya akan cepat terbaca ketika kita klik “start”

**Brute-Force Attack** ✕

Charset

Predefined

abcdefghijklmnopqrstuvwxyz0123456789

Custom

\_\_\_\_\_

Password length

Min

Max

Start from

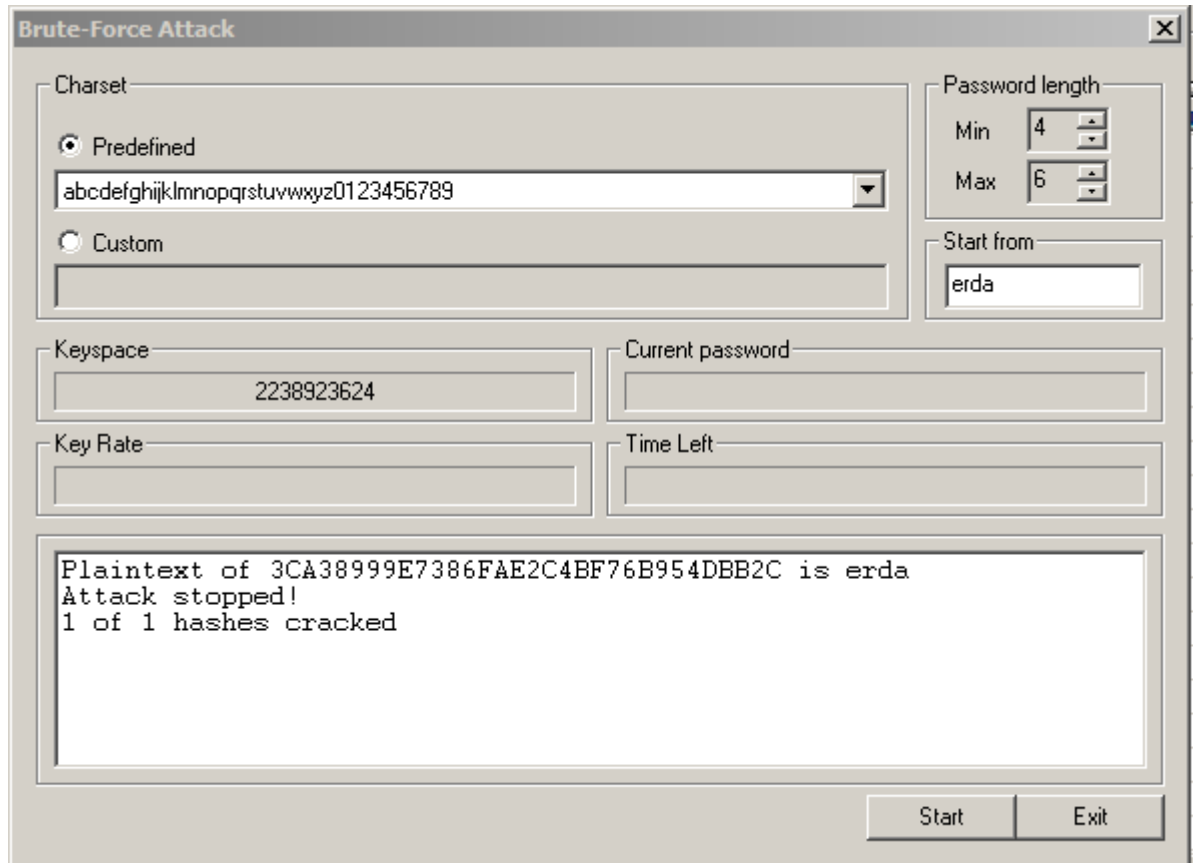
Keyspace

Current password

Key Rate

Time Left

```
1 hashes of type NTLM loaded...
Press the Start button to begin brute-force attack
```

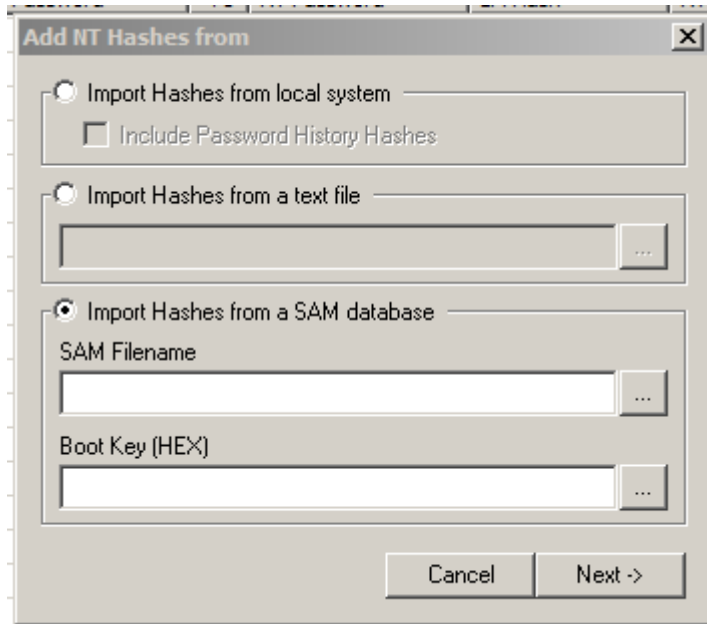


Maka password akan langsung terbaca

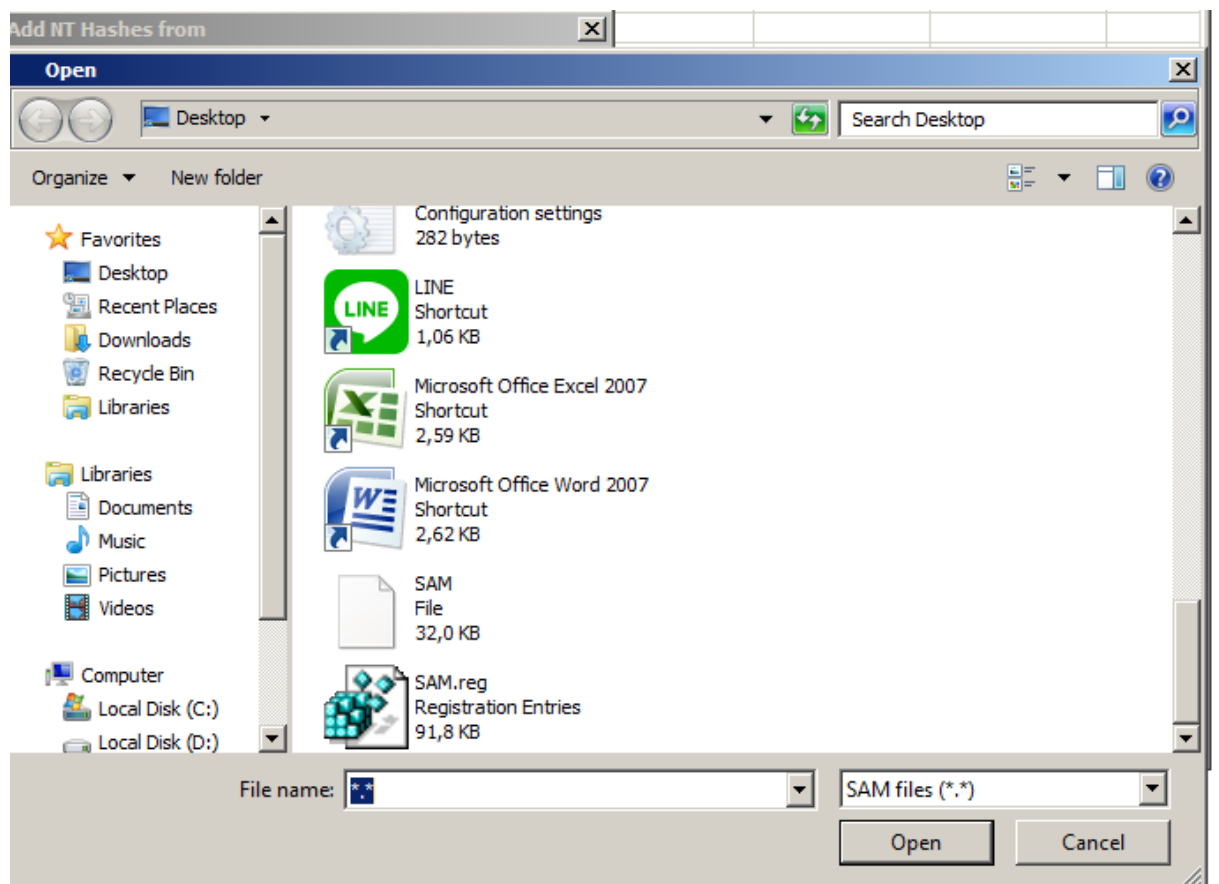
User Name	LM Password	< 8	NT Password	LM Hash	NT Hash	challenge	Type	Note
acer	* empty *	*	erda	AAD3B435B514...	3CA38999E738...		LM & NTLM	
Administrator	* empty *	*	* empty *	AAD3B435B514...	31D6CFE0D16A...		LM & NTLM	
Guest	* empty *	*	* empty *	AAD3B435B514...	31D6CFE0D16A...		LM & NTLM	

Jika menggunakan file SAM tadi, maka pilih “Import Hashes from a SAM database”

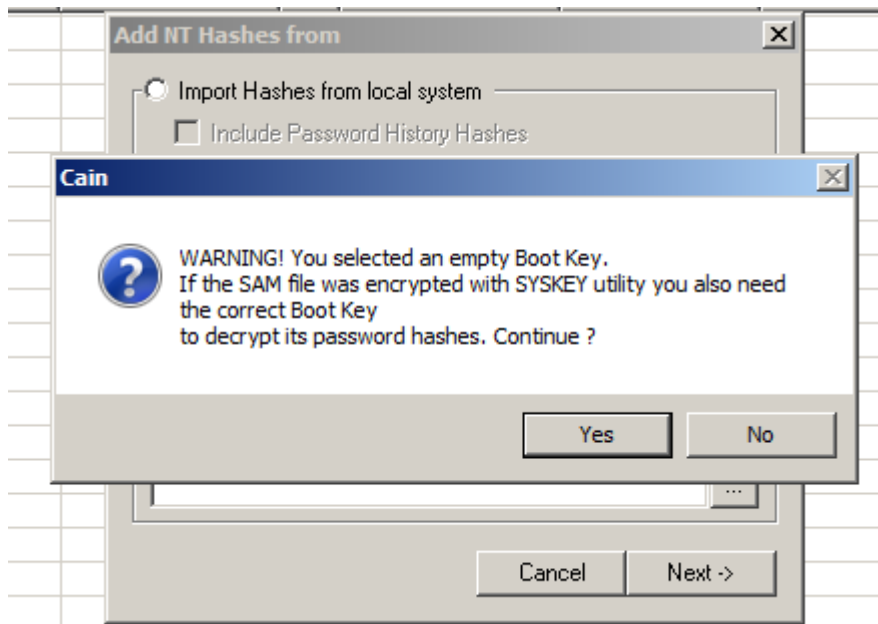
Cari file sam kita yang simpan berdasarkan langkah sebelumnya, saya disimpan di desktop.



Kita akan mencari file SAM tadi, dan klik Open



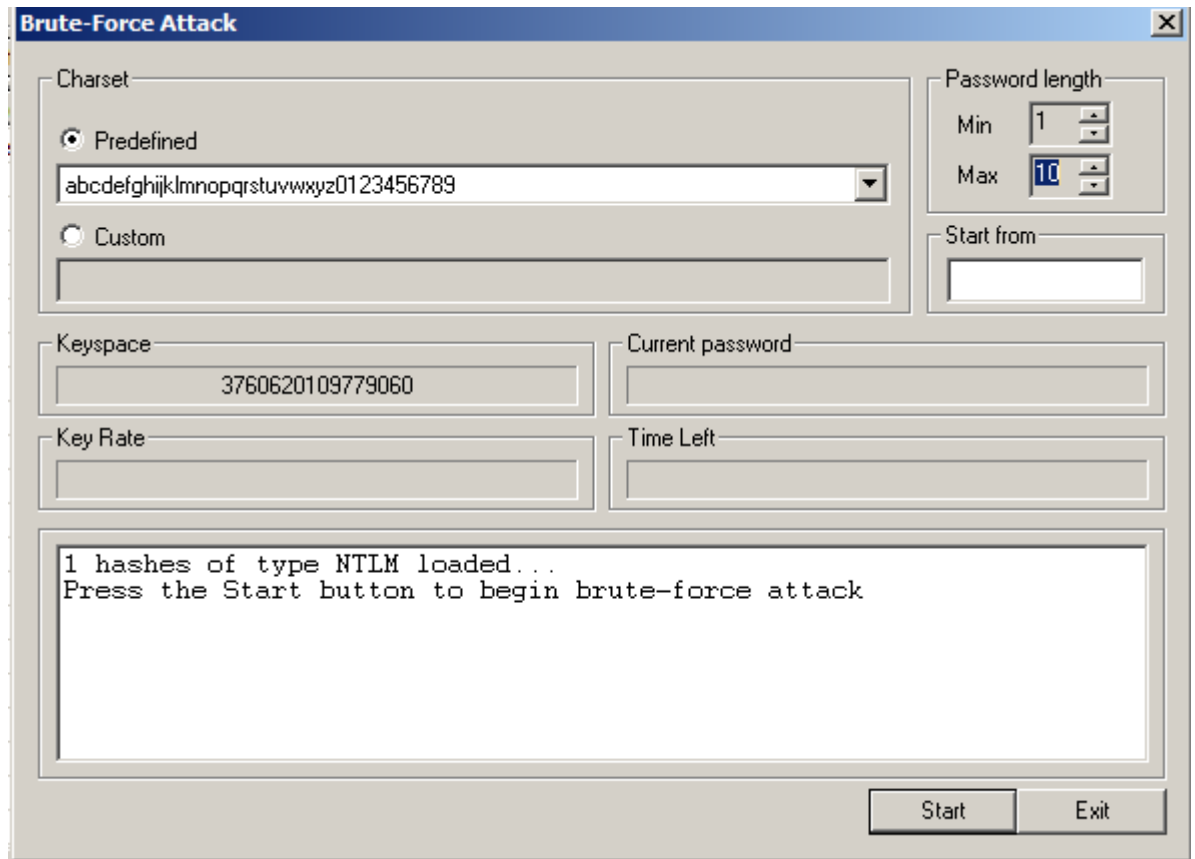
Klik Yes



Maka akan terbaca 3 user. Selanjutnya Kemudian klik nama user yang akan kita hack passwordnya. Klik kanan "Brute-Force Attack, NTLM Hashes

User Name	LM Password	< 8	NT Password	LM Hash	NT Hash	challenge	Type	Note
Administrator	* empty *	*		AAAD3B435F544	9950A75CB1B3...		LM & NTLM	
Guest	* empty *	*					LM & NTLM	
acer	* empty *	*						

Pilih range password leght, dan klik start



Kemudian cain akan mulai menscan hingga password yang menurutnya mendekati.

