

Nama : Alan Prayoga

NIM : 09031381520077

Kelas : SIREG 4B

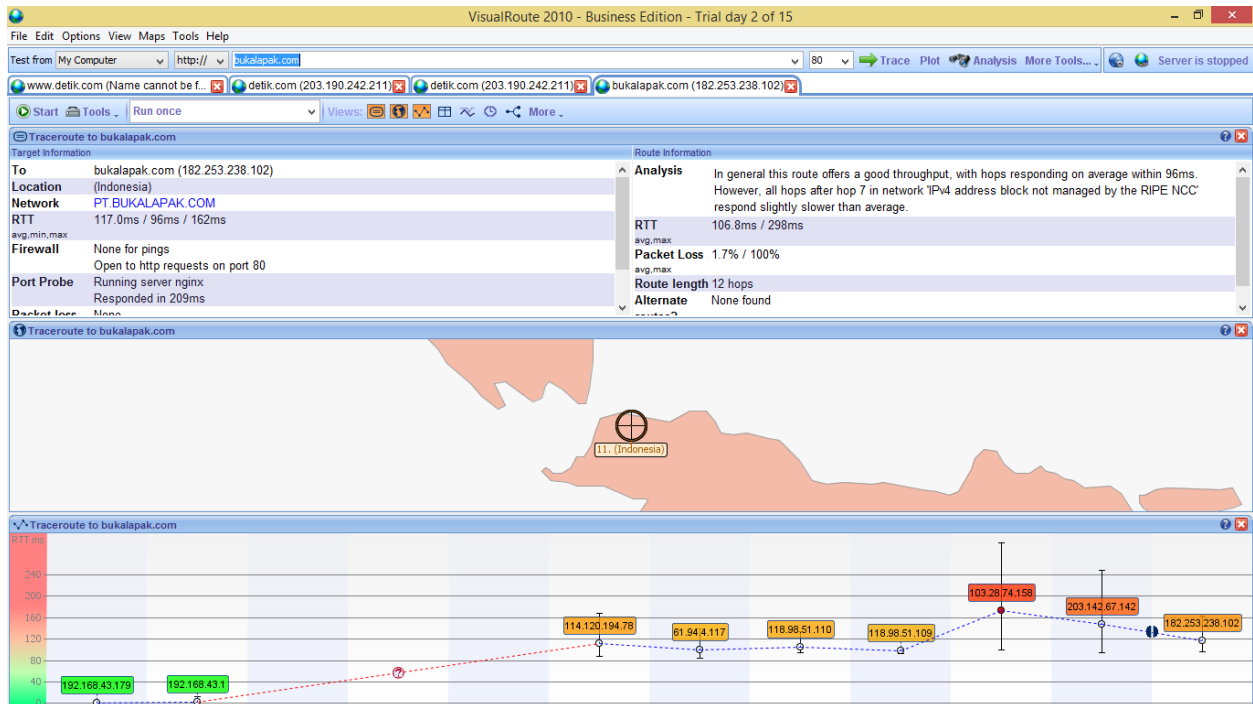
KOMUNIKASI DATA DAN JARINGAN KOMPUTER

1. Menganalisis traceroute pada 2 website dalam negeri dan 2 website luar negeri.

Saya membuat tugas ini dengan menggunakan software visualroute 2010 serta tracert menggunakan CMD. 2 website dalam negeri yang saya pakai adalah www.bukalapak.com dan www.kaskus.co.id sedangkan untuk 2 website luar negeri saya memakai www.ebay.com dan www.yahoo.com

2 website dalam negeri :

1. www.bukalapak.com



```

C:\Users\Win 8.1 Pro>tracert bukalapak.com

Tracing route to bukalapak.com [182.253.238.102]
over a maximum of 30 hops:

  0  1 ms    1 ms    1 ms    192.168.43.1
  1  *      *      *      Request timed out.
  2  *      *      *      Request timed out.
  3  *      *      *      Request timed out.
  4  *      *      *      Request timed out.
  5  83 ms  108 ms  87 ms   114.120.194.78
  6  87 ms  83 ms  127 ms  61.94.4.117
  7  377 ms 468 ms 533 ms  118.98.51.110
  8  535 ms 483 ms 609 ms  118.98.51.109
  9  426 ms 459 ms 550 ms  103.28.74.158
 10 336 ms 630 ms 1297 ms 203.142.67.142
 11 987 ms 958 ms 568 ms  182.253.238.102

Trace complete.

```

```

C:\Users\Win 8.1 Pro>ping bukalapak.com

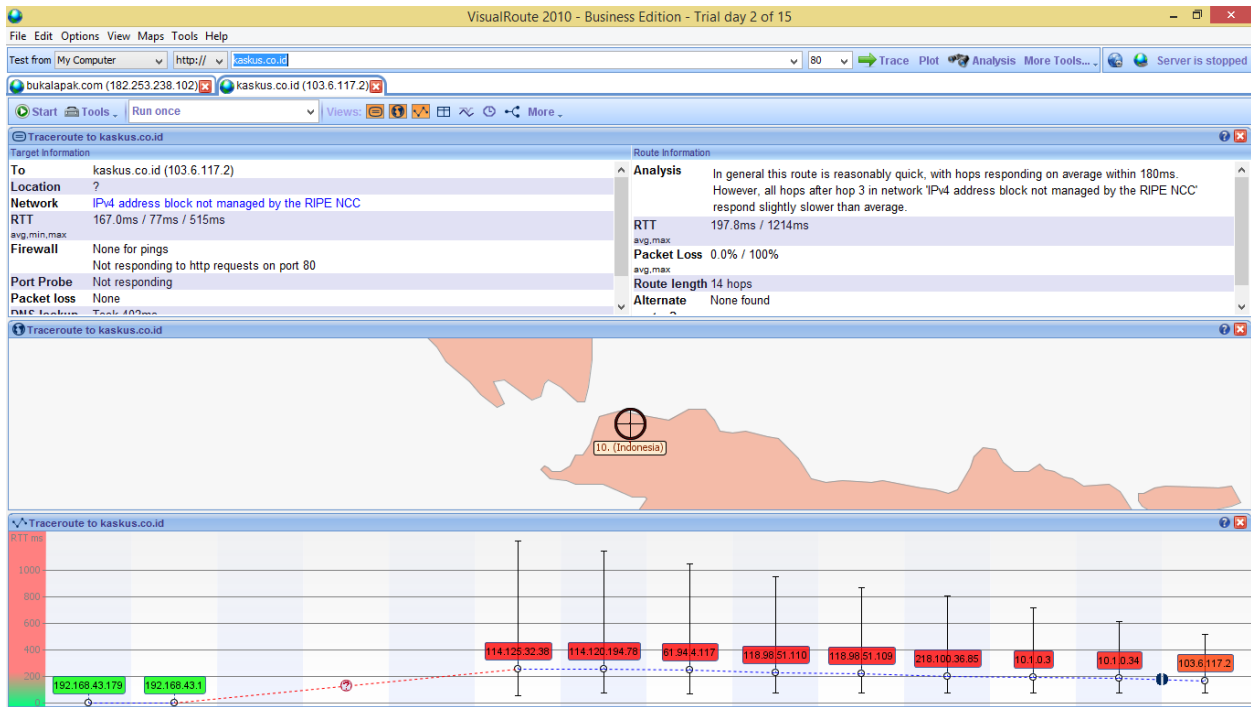
Pinging bukalapak.com [182.253.238.102] with 32 bytes of data:
Reply from 182.253.238.102: bytes=32 time=995ms TTL=54
Reply from 182.253.238.102: bytes=32 time=299ms TTL=54
Reply from 182.253.238.102: bytes=32 time=366ms TTL=54
Reply from 182.253.238.102: bytes=32 time=976ms TTL=54

Ping statistics for 182.253.238.102:
    Packets: Sent = 4, Received = 4, Lost = 0 (0% loss),
    Approximate round trip times in milli-seconds:
        Minimum = 299ms, Maximum = 995ms, Average = 659ms

```

- Alamat ip : 182.253.238.102
- Terdapat 12 hops
- Berlokasi di Indonesia
- Network milik PT.BUKALAPAK.COM
- RTT 117.0ms/96ms/162ms

2. www.kaskus.co.id



```
C:\Users\Win 8.1 Pro>tracert kaskus.co.id

Tracing route to kaskus.co.id [103.6.117.2]
over a maximum of 30 hops:

  1    1 ms    1 ms    1 ms    192.168.43.1
  2    *        *        *        Request timed out.
  3    *        *        *        Request timed out.
  4    *        *        *        Request timed out.
  5    64 ms   47 ms   41 ms   114.125.32.38
  6    94 ms   74 ms   71 ms   114.120.194.78
  7    71 ms   82 ms   67 ms   61.94.4.117
  8    93 ms   69 ms   66 ms   118.98.51.110
  9    71 ms   77 ms   73 ms   118.98.51.109
 10   88 ms   70 ms   96 ms   218.100.36.85
 11   70 ms   74 ms   68 ms   10.1.0.3
 12   83 ms   74 ms   85 ms   10.1.0.34
 13   88 ms   88 ms   68 ms   103.6.117.2

Trace complete.
```

```
C:\Users\Win 8.1 Pro>ping kaskus.co.id

Pinging kaskus.co.id [103.6.117.2] with 32 bytes of data:
Reply from 103.6.117.2: bytes=32 time=128ms TTL=54
Reply from 103.6.117.2: bytes=32 time=504ms TTL=54
Reply from 103.6.117.2: bytes=32 time=230ms TTL=54
Reply from 103.6.117.2: bytes=32 time=304ms TTL=54

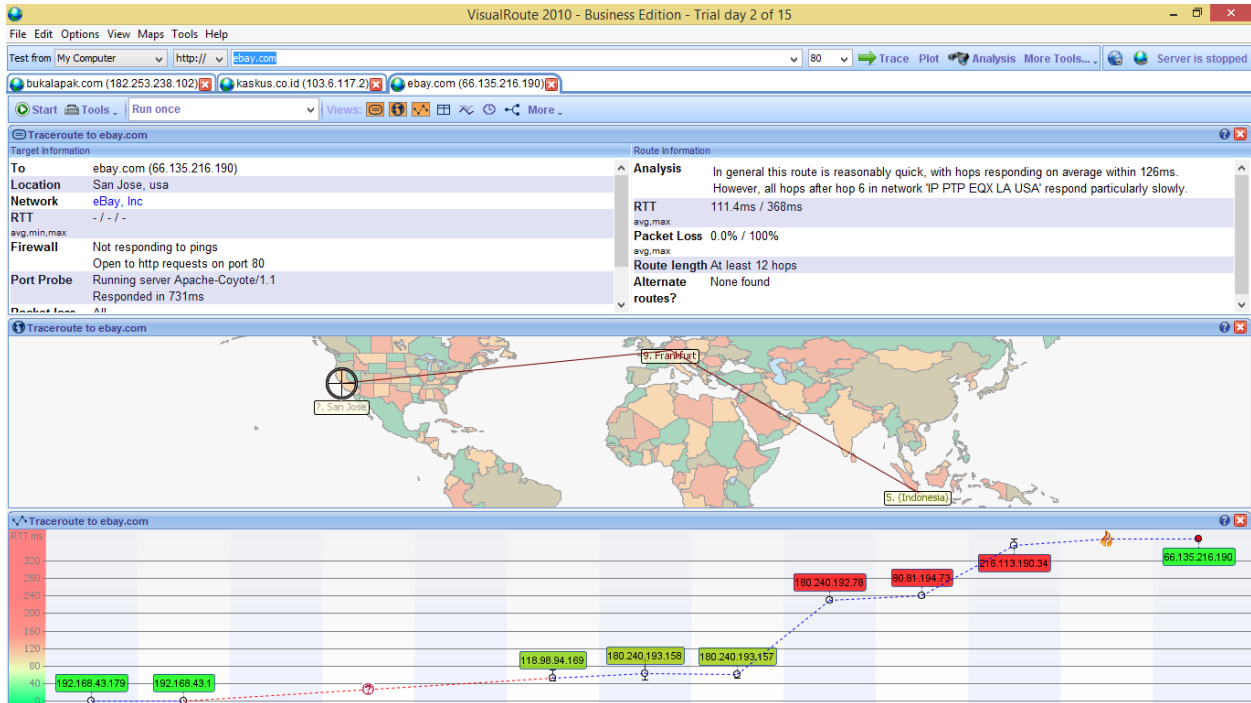
Ping statistics for 103.6.117.2:
    Packets: Sent = 4, Received = 4, Lost = 0 (0% loss),
    Approximate round trip times in milli-seconds:
        Minimum = 128ms, Maximum = 504ms, Average = 291ms
```

- Alamat ip : 103.6.117.2
- Terdapat 14 hops

- Berlokasi di Indonesia
- RTT 167.0ms/77ms/515ms

2 website luar negeri :

1. www.ebay.com



```

C:\Users\Win 8.1 Pro>tracert ebay.com

Tracing route to ebay.com [66.135.216.190]
over a maximum of 30 hops:

  1    11 ms     1 ms     <1 ms   192.168.43.1
  2    *         *         *       Request timed out.
  3    *         *         *       Request timed out.
  4    *         *         *       Request timed out.
  5   115 ms    89 ms    75 ms   118.98.94.169
  6    87 ms    85 ms    113 ms  180.240.193.158
  7   184 ms   148 ms    86 ms  180.240.193.157
  8   291 ms   292 ms   310 ms  180.240.192.78
  9   305 ms   323 ms   262 ms  80.81.194.73
 10  405 ms   418 ms   383 ms  216.113.190.34
 11  *         *         *       Request timed out.
 12  *         *         *       Request timed out.
 13  *         *         *       Request timed out.
 14  *         *         *       Request timed out.
 15  *         *         *       Request timed out.
 16  *         *         *       Request timed out.
 17  *         *         *       Request timed out.
 18  *         *         *       Request timed out.
 19  *         *         *       Request timed out.
 20  *         *         *       Request timed out.
 21  *         *         *       Request timed out.
 22  *         *         *       Request timed out.
 23  *         *         *       Request timed out.
 24  *         *         *       Request timed out.
 25  *         *         *       Request timed out.
 26  *         *         *       Request timed out.
 27  *         *         *       Request timed out.
 28  *         *         *       Request timed out.
 29  *         *         *       Request timed out.
 30  *         *         *       Request timed out.

Trace complete.

```

```

C:\Users\Win 8.1 Pro>ping ebay.com

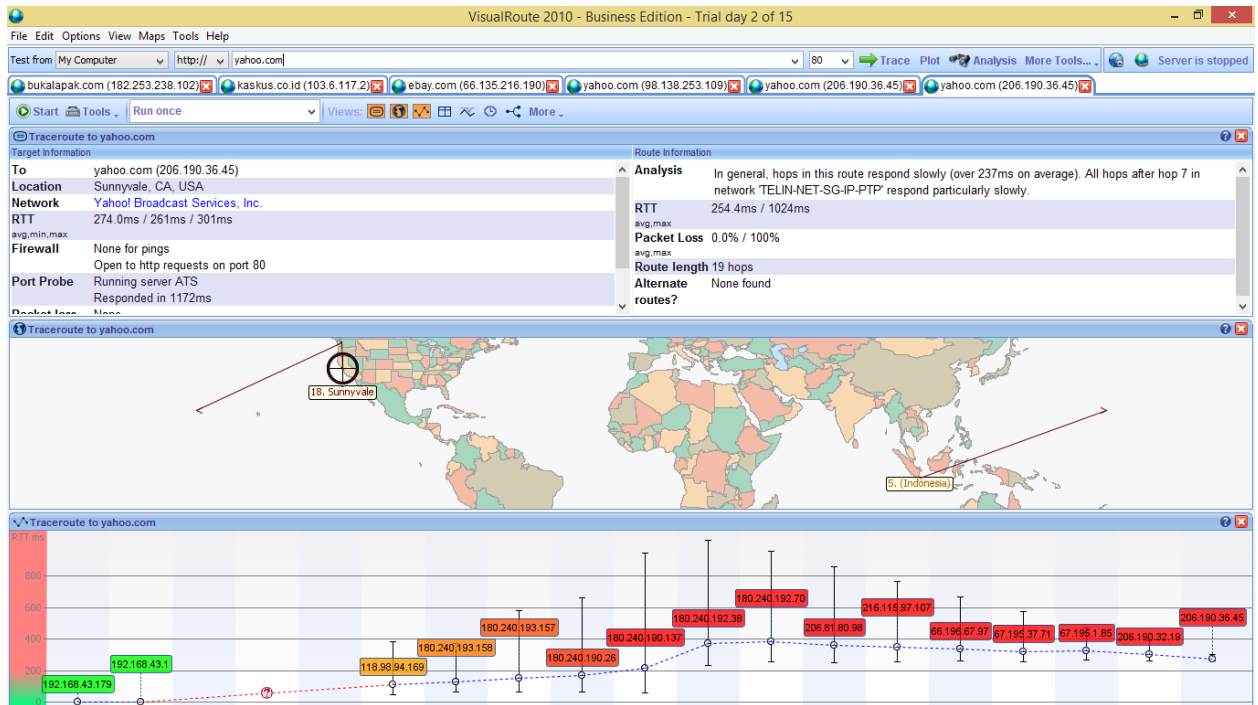
Pinging ebay.com [66.135.216.190] with 32 bytes of data:
Request timed out.
Request timed out.
Request timed out.
Request timed out.

Ping statistics for 66.135.216.190:
    Packets: Sent = 4, Received = 0, Lost = 4 (100% loss),

```

- Alamat ip : 66.135.216.190
- Terdapat 12 hops
- Berlokasi di San Jose,USA
- Network milik eBay, Inc
- RTT -/-/-

2. www.yahoo.com



```
C:\Users\Win 8.1 Pro>tracert yahoo.com
Tracing route to yahoo.com [98.138.253.109]
over a maximum of 30 hops:

  0  1 ms    1 ms    2 ms    192.168.43.1
  1  *      *      *      Request timed out.
  2  *      *      *      Request timed out.
  3  *      *      *      Request timed out.
  4  *      *      *      Request timed out.
  5  63 ms   59 ms   98 ms   118.98.94.169
  6  109 ms  99 ms   487 ms  180.240.193.158
  7  127 ms  73 ms   67 ms   180.240.193.157
  8  *      *      *      Request timed out.
  9  89 ms   88 ms   627 ms  180.240.204.22
 10 1301 ms  801 ms  568 ms  93.186.133.61
 11  84 ms   336 ms  144 ms  27.111.228.3
 12  381 ms  121 ms  186 ms  203.84.209.52
 13  122 ms  330 ms  125 ms  183.177.76.29
 14  271 ms  358 ms  269 ms  203.84.211.50
 15  375 ms  654 ms  549 ms  216.115.101.148
 16  875 ms  326 ms  365 ms  216.115.100.8
 17  315 ms  333 ms  351 ms  216.115.105.181
 18  335 ms  428 ms  817 ms  98.138.97.75
 19  338 ms  340 ms  315 ms  98.138.93.3
 20  384 ms  1188 ms 349 ms  98.138.240.30
 21  305 ms  317 ms  306 ms  98.138.253.109

Trace complete.
```

```
C:\Users\Win 8.1 Pro>ping yahoo.com
Pinging yahoo.com [98.138.253.109] with 32 bytes of data:
Reply from 98.138.253.109: bytes=32 time=947ms TTL=49
Reply from 98.138.253.109: bytes=32 time=455ms TTL=49
Reply from 98.138.253.109: bytes=32 time=608ms TTL=49
Reply from 98.138.253.109: bytes=32 time=287ms TTL=49

Ping statistics for 98.138.253.109:
    Packets: Sent = 4, Received = 4, Lost = 0 (0% loss),
    Approximate round trip times in milli-seconds:
        Minimum = 287ms, Maximum = 947ms, Average = 574ms
```

- Alamat ip : 98.138.253.109
- Terdapat 22 hops
- Berlokasi di Sunnyvale,CA,USA
- Network milik Yahoo! Inc.
- RTT 117.0ms/96ms/162ms